

## Product datasheet for **TP319996L**

### **BFSP2 (NM\_003571) Human Recombinant Protein**

#### Product data:

Product Type:	Recombinant Proteins
Description:	Recombinant protein of human beaded filament structural protein 2, phakinin (BFSP2), 1 mg
Species:	Human
Expression Host:	HEK293T
Expression cDNA Clone or AA Sequence:	>RC219996 protein sequence <b>Red</b> =Cloning site <b>Green</b> =Tags(s)

MSERRVVDLPTSASSSMPLQRRRASFRGPRSSSSLESPPASRTNAMSGLVRAPGVVYVGTAPSGCIGGLG  
ARVTRRALGISSVFLQGLRSSGLATVPAPGLERDGHGAVEDLGGCLVEYMAKVHALEQVSQELETQLRMHL  
ESKATRSGNWGALRASWASSCQQVGEAVLENARLMLQTETIQAGADDFKERYENEQPFRKAAEEEEINSLY  
KVIDEANLTKMDLESQIESLKEELGSLSRNYEEDVKLLHKQLAGCELEQMDAPIGTGLDDILETIRIQWE  
RDVEKNRVEAGALLQAKQQA EVAHMSQTQEEKLAAALRVELHNTSCVQVSLQAETESLRALKRGLENTLH  
DAKHWHDMELQNLGAVVGRLEAELREIRAEAEQQQQERAHLLARKCQLQKDVASYHALLDREESG

**TR**TRPLEQKLISEEDLAANDILDYKDDDDKV

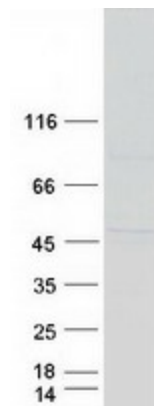
Tag:	C-Myc/DDK
Predicted MW:	45.7 kDa
Concentration:	>0.05 µg/µL as determined by microplate BCA method
Purity:	> 80% as determined by SDS-PAGE and Coomassie blue staining
Buffer:	25 mM Tris-HCl, 100 mM glycine, pH 7.3, 10% glycerol
Preparation:	Recombinant protein was captured through anti-DDK affinity column followed by conventional chromatography steps.
Note:	For testing in cell culture applications, please filter before use. Note that you may experience some loss of protein during the filtration process.
Storage:	Store at -80°C.
Stability:	Stable for 12 months from the date of receipt of the product under proper storage and handling conditions. Avoid repeated freeze-thaw cycles.
RefSeq:	<a href="#">NP_003562</a>
Locus ID:	8419



[View online »](#)

UniProt ID:	<a href="#">Q13515</a>
RefSeq Size:	1595
Cytogenetics:	3q22.1
RefSeq ORF:	1245
Synonyms:	CP47; CP49; CTRCT12; LIFL-L; PHAKOSIN
Summary:	More than 99% of the vertebrate ocular lens is comprised of terminally differentiated lens fiber cells. Two lens-specific intermediate filament-like proteins, the protein product of this gene (phakinin), and filensin, are expressed only after fiber cell differentiation has begun. Both proteins are found in a structurally unique cytoskeletal element that is referred to as the beaded filament (BF). Mutations in this gene have been associated with juvenile-onset, progressive cataracts and Dowling-Meara epidermolysis bullosa simplex. [provided by RefSeq, Jun 2009]

### Product images:



Coomassie blue staining of purified BFSP2 protein (Cat# [TP319996]). The protein was produced from HEK293T cells transfected with BFSP2 cDNA clone (Cat# [RC219996]) using MegaTran 2.0 (Cat# [TT210002]).