

Product datasheet for **TP319975L**

LASP1 (NM_006148) Human Recombinant Protein

Product data:

Product Type:	Recombinant Proteins
Description:	Recombinant protein of human LIM and SH3 protein 1 (LASP1), 1 mg
Species:	Human
Expression Host:	HEK293T
Expression cDNA Clone or AA Sequence:	>RC219975 representing NM_006148 Red =Cloning site Green =Tags(s)

MNPNCARCGKIVYPTEKVNCLDKFWHKACFHCETCKMTLNMKNYKGYEKKPYCNAHYPKQSFTMVADTPE
NLRLKQQSELQSQVRYKEEFEKNKGKGFVADTPELQRIKKTQDQISNIKYHEEFEKSRMGPSGGEGME
PERRDSQDGSSYRRPLEQQPHHIPTSAPVYQQPQQQPVAQSYGGYKEPAAPVSIQRSAPGGGGKRYRAV
YDYSAADEDEVSFQDGDITVNVQQIDDGWVMTVERTGDTGMLPANYVEAI

TRTRPLEQKLISEEDLAANDILDYKDDDDKV

Tag:	C-Myc/DDK
Predicted MW:	29.5 kDa
Concentration:	>0.05 µg/µL as determined by microplate BCA method
Purity:	> 80% as determined by SDS-PAGE and Coomassie blue staining
Buffer:	25 mM Tris-HCl, 100 mM glycine, pH 7.3, 10% glycerol
Preparation:	Recombinant protein was captured through anti-DDK affinity column followed by conventional chromatography steps.
Note:	For testing in cell culture applications, please filter before use. Note that you may experience some loss of protein during the filtration process.
Storage:	Store at -80°C.
Stability:	Stable for 12 months from the date of receipt of the product under proper storage and handling conditions. Avoid repeated freeze-thaw cycles.
RefSeq:	<u>NP_006139</u>
Locus ID:	3927
UniProt ID:	<u>Q14847</u> , <u>A0A024R1S8</u>



[View online »](#)

RefSeq Size: 3846

Cytogenetics: 17q12

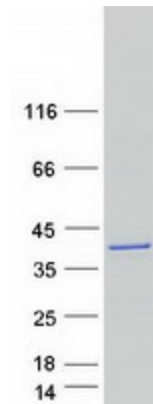
RefSeq ORF: 783

Synonyms: Lasp-1; MLN50

Summary: This gene encodes a member of a subfamily of LIM proteins, characterized by a LIM motif and a domain of Src homology region 3, and also a member of the nebulin family of actin-binding proteins. The encoded protein is a cAMP and cGMP dependent signaling protein and binds to the actin cytoskeleton at extensions of the cell membrane. The encoded protein has been linked to metastatic breast cancer, hematopoietic tumors such as B-cell lymphomas, and colorectal cancer. [provided by RefSeq, Oct 2012]

Protein Families: Druggable Genome

Product images:



Coomassie blue staining of purified LASP1 protein (Cat# [TP319975]). The protein was produced from HEK293T cells transfected with LASP1 cDNA clone (Cat# [RC219975]) using MegaTran 2.0 (Cat# [TT210002]).