

Product datasheet for TP319942M

Complement factor 8 beta (C8B) (NM_000066) Human Recombinant Protein

Product data:

Product Type:	Recombinant Proteins
Description:	Recombinant protein of human complement component 8, beta polypeptide (C8B), 100 µg
Species:	Human
Expression Host:	HEK293T
Expression cDNA Clone or AA Sequence:	>RC219942 protein sequence Red =Cloning site Green =Tags(s)
	<p>MKNSRTWAWRAPVELFLLCAALGCLSLPGSRGERPHSFGSNAVNKSFAKSRQMRSDVTLMPIDCELSW SSWTTCDPCQKKRYRYAYLLQPSQFHGEPNFSKVEEDCVTNRPCRSQVRCEGFVCAQTGRCVNRLLC NGDNDCGDQSDDEANCRRIYKCCQHEMDQYWIGSLASGINLFTNSFEGPVLDRHYAGGCSPHYILNTRF RKPYNVESYTPQTQGKYEFILKEYESYDFERNVTEKMASKSGFSFGFKIPGIFELGISSQSDRGKHYIR RTKRFSHTKSVFLHARSDLEVAHYKPKRSLMLHYEFLQRVKRPLEYSYGEYRDLFRDFGTHYTEAVL GGIYEYTLVMNKEAMERGDYTLNNVHACAKNDFKIGGAIEEVYVSLGVSVGKCRGILNEIKDRNKRDTMV EDLVVLRGGASEHITTLAYQELPTADLMQEWGDAVQYNPAIIKVKVEPLYELVTATDFAYSSTVRQNMK QALEEFQKEVSSCHCAPCQGNVPLKGSRCDCICPVGSQGLACEVSYRKNTPIDGKWNWWSWSSCSGR RKTRQRQCNNPPPQNGGSPCSGPASETLDCS</p> <p>TRTRPLEQKLISEEDLAANDILDYKDDDDKV</p>
Tag:	C-Myc/DDK
Predicted MW:	63.4 kDa
Concentration:	>0.05 µg/µL as determined by microplate BCA method
Purity:	> 80% as determined by SDS-PAGE and Coomassie blue staining
Buffer:	25 mM Tris-HCl, 100 mM glycine, pH 7.3, 10% glycerol
Preparation:	Recombinant protein was captured through anti-DDK affinity column followed by conventional chromatography steps.
Note:	For testing in cell culture applications, please filter before use. Note that you may experience some loss of protein during the filtration process.
Storage:	Store at -80°C.



[View online »](#)

Stability: Stable for 12 months from the date of receipt of the product under proper storage and handling conditions. Avoid repeated freeze-thaw cycles.

RefSeq: [NP_000057](#)

Locus ID: 732

UniProt ID: [P07358](#)

RefSeq Size: 2178

Cytogenetics: 1p32.2

RefSeq ORF: 1773

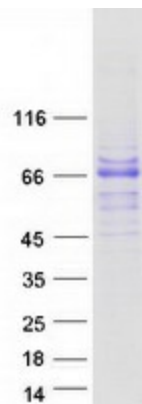
Synonyms: C82

Summary: This gene encodes one of the three subunits of the complement component 8 (C8) protein. C8 is composed of equimolar amounts of alpha, beta and gamma subunits, which are encoded by three separate genes. C8 is one component of the membrane attack complex, which mediates cell lysis, and it initiates membrane penetration of the complex. This protein mediates the interaction of C8 with the C5b-7 membrane attack complex precursor. In humans deficiency of this protein is associated with increased risk of meningococcal infections. Alternative splicing results in multiple transcript variants. [provided by RefSeq, Jun 2013]

Protein Families: Druggable Genome, Secreted Protein, Transmembrane

Protein Pathways: Complement and coagulation cascades, Prion diseases, Systemic lupus erythematosus

Product images:



Coomassie blue staining of purified C8B protein (Cat# [TP319942]). The protein was produced from HEK293T cells transfected with C8B cDNA clone (Cat# [RC219942]) using MegaTran 2.0 (Cat# [TT210002]).