

Product datasheet for **TP319911L**

PRB1 (NM_199354) Human Recombinant Protein

Product data:

Product Type:	Recombinant Proteins
Description:	Recombinant protein of human proline-rich protein BstNI subfamily 1 (PRB1), transcript variant 3, 1 mg
Species:	Human
Expression Host:	HEK293T
Expression cDNA Clone or AA Sequence:	>RC219911 representing NM_199354 Red =Cloning site Green =Tags(s) MLLILLSVALLALSSAQNLNEDVVSQEESPLIAGNPQGSPQGGNKPQGPPPPGKPGPPQGGNKPQG PLPPGKPGPPQGDKSRSPRSPGKPGPPQGGKPGPPAQGGSKSQSARAPPKPGPPQEGNNPQ GPPPPAGGNPQQPQAPPAGQPQGGPRPPQGGRRSRPPQ TRTRPLEQKLISEEDLAANDILDYKDDDDKV
Tag:	C-Myc/DDK
Predicted MW:	16 kDa
Concentration:	>0.05 µg/µL as determined by microplate BCA method
Purity:	> 80% as determined by SDS-PAGE and Coomassie blue staining
Buffer:	25 mM Tris-HCl, 100 mM glycine, pH 7.3, 10% glycerol
Preparation:	Recombinant protein was captured through anti-DDK affinity column followed by conventional chromatography steps.
Note:	For testing in cell culture applications, please filter before use. Note that you may experience some loss of protein during the filtration process.
Storage:	Store at -80°C.
Stability:	Stable for 12 months from the date of receipt of the product under proper storage and handling conditions. Avoid repeated freeze-thaw cycles.
RefSeq:	NP_955386
Locus ID:	5542
UniProt ID:	P04280



[View online »](#)

RefSeq Size: 714

Cytogenetics: 12p13.2

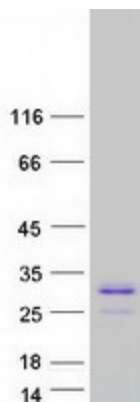
RefSeq ORF: 534

Synonyms: PM; PMF; PMS; PRB1L; PRB1M

Summary: This gene encodes a member of the heterogeneous family of basic, proline-rich, human salivary glycoproteins. The encoded preproprotein undergoes proteolytic processing to generate one or more mature peptides before secretion from the parotid glands. Multiple alleles of this gene exhibiting variations in the length of the tandem repeats have been identified. The reference genome encodes the "Medium" allele. This gene is located in a cluster of closely related salivary proline-rich proteins on chromosome 12. Alternative splicing results in multiple transcript variants encoding different isoforms that may undergo similar proteolytic processing. [provided by RefSeq, Nov 2015]

Protein Families: Druggable Genome

Product images:



Coomassie blue staining of purified PRB1 protein (Cat# [TP319911]). The protein was produced from HEK293T cells transfected with PRB1 cDNA clone (Cat# [RC219911]) using MegaTran 2.0 (Cat# [TT210002]).