

Product datasheet for **TP319899**

TMEM215 (NM_212558) Human Recombinant Protein

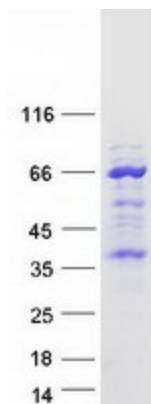
Product data:

Product Type:	Recombinant Proteins
Description:	Recombinant protein of human transmembrane protein 215 (TMEM215), 20 µg
Species:	Human
Expression Host:	HEK293T
Expression cDNA Clone or AA Sequence:	>RC219899 representing NM_212558 Red =Cloning site Green =Tags(s)
	<p>MRPDDINPRTGLVVALVSVFLVFGFMFTVSGMKGETLGNIPLLAIGPAICLPGIAAIALARKTEGCTKRP ENELLWVRKLPFCFRKPKDKEVVELLRTPSDLESKGKSSDELAKKAGLRGKPPPQSQGEVSVASSINSPTP TEEGECQSLVQNGHQEETSRYLGDGYCPSGSSLTYSALDVKCSARDRSECEPEPESIFFVPQDSIIVCSYK QNSPYDRYCCYINQIQGRWDHETIV</p> <p>TRTRPLEQKLISEEDLAANDILDYKDDDDKV</p>
Tag:	C-Myc/DDK
Predicted MW:	25.6 kDa
Concentration:	>0.05 µg/µL as determined by microplate BCA method
Purity:	> 80% as determined by SDS-PAGE and Coomassie blue staining
Buffer:	25 mM Tris-HCl, 100 mM glycine, pH 7.3, 10% glycerol
Preparation:	Recombinant protein was captured through anti-DDK affinity column followed by conventional chromatography steps.
Note:	For testing in cell culture applications, please filter before use. Note that you may experience some loss of protein during the filtration process.
Storage:	Store at -80°C.
Stability:	Stable for 12 months from the date of receipt of the product under proper storage and handling conditions. Avoid repeated freeze-thaw cycles.
RefSeq:	NP_997723
Locus ID:	401498
UniProt ID:	Q68D42



[View online »](#)

RefSeq Size: 3581
Cytogenetics: 9p21.1
RefSeq ORF: 705
Protein Families: Transmembrane

Product images:

Coomassie blue staining of purified TMEM215 protein (Cat# TP319899). The protein was produced from HEK293T cells transfected with TMEM215 cDNA clone (Cat# [RC219899]) using MegaTran 2.0 (Cat# [TT210002]).