

Product datasheet for TP319881

UQCRHL (NM_001089591) Human Recombinant Protein

Product data:

Product Type:	Recombinant Proteins
Description:	Recombinant protein of human ubiquinol-cytochrome c reductase hinge protein-like (UQCRHL), 20 µg
Species:	Human
Expression Host:	HEK293T
Expression cDNA Clone or AA Sequence:	>RC219881 representing NM_001089591 Red=Cloning site Green=Tags(s)
	MGLEDEQKMLTESGDPEEEEEEEELVDPLTTVREQCEQLEKCVKARERLELYDEHVSSRSHTTEEDCTEE LFDLHAKDHCVAHKLFNNLK
	TRTRPLEQKLISEEDLAANDILDYKDDDDKV
Tag:	C-Myc/DDK
Predicted MW:	10.6 kDa
Concentration:	>0.05 µg/µL as determined by microplate BCA method
Purity:	> 80% as determined by SDS-PAGE and Coomassie blue staining
Buffer:	25 mM Tris-HCl, 100 mM glycine, pH 7.3, 10% glycerol
Preparation:	Recombinant protein was captured through anti-DDK affinity column followed by conventional chromatography steps.
Note:	For testing in cell culture applications, please filter before use. Note that you may experience some loss of protein during the filtration process.
Storage:	Store at -80°C.
Stability:	Stable for 12 months from the date of receipt of the product under proper storage and handling conditions. Avoid repeated freeze-thaw cycles.
RefSeq:	<u>NP_001083060</u>
Locus ID:	440567
UniProt ID:	<u>A0A096LP55</u>
RefSeq Size:	538



[View online »](#)

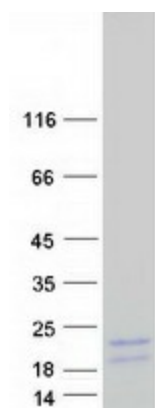
Cytogenetics: 1p36.21

RefSeq ORF: 273

Summary: This gene has characteristics of a pseudogene derived from the UQCRH gene. However, there is still an open reading frame that could produce a protein of the same or nearly the same size as that of the UQCRH gene, so this gene is being called protein-coding for now. [provided by RefSeq, Jul 2008]

Protein Pathways: Alzheimer's disease, Cardiac muscle contraction, Huntington's disease, Metabolic pathways, Oxidative phosphorylation, Parkinson's disease

Product images:



Coomassie blue staining of purified UQCRHL protein (Cat# TP319881). The protein was produced from HEK293T cells transfected with UQCRHL cDNA clone (Cat# [RC219881]) using MegaTran 2.0 (Cat# [TT210002]).