

Product datasheet for TP319860L

SH3BP1 (NM_018957) Human Recombinant Protein

Product data:

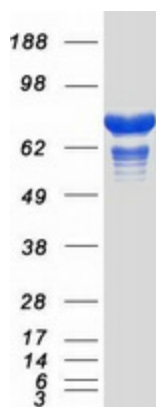
Product Type:	Recombinant Proteins
Description:	Recombinant protein of human SH3-domain binding protein 1 (SH3BP1), 1 mg
Species:	Human
Expression Host:	HEK293T
Expression cDNA Clone or AA Sequence:	>RC219860 representing NM_018957 Red=Cloning site Green=Tags(s)
	<p>MMKRQLHRMRQLAQTGSLGRTPETAEFLGEDLLQVEQRLEPAKRAAHNIHKRLQACLQGQSGADMDKRVK KLPLMALSTTMAESFKELDPDSSMGKALEMSCAIQNQLARILAEFEMTLERDVLQPLSRLSEEELPAILK HKKSLQKLVSDWNTLKSRLSQATKNSGSSQGLGGSPGSHSHTTMANKVETLKEEEEEELKRKVEQCRDEYL ADLYHFVTKEDSYANYFIRLLEIQADYHRRSLSSLDTALAELRENHGQADHSPSMTATHFPRVYGVSLAT HLQELGREIALPIEACVMMLLSEGMKEEGLFRLAAGASVLKRLKQTMASDPHSLEEFCSDPHAVAGALKS YLRELPEPLMTFDLYDDWMRAASLKEPGARLQALQEVCSRLPPENLSNLRYLMKFLARLAEQEVENKMTP SNIAIVLGNLLWPPEKEGDQAQLDAASVSSIQVVGVEALIQSADTLFPGDINFVSGLFSAVTLQDTV SDRLASEELPSTAVPTPATTAPAPAPAPAPALASAATKERTESEVPPRPASPKVTRSPPETAAPVED MARRTKRPAPARPTMPPPQVSGSRSSPPAPPLPPGSGSPGTPQALPRRLVGSSSLRAPTVPPPLPPTPPQP ARRQSRSPASPSPGASPSPVLSNPAQVDLGAATAEGGAPEAISGVPTPPAIPPQPRPRSLASET N</p> <p>TRTRPLEQKLISEEDLAANDILDYKDDDDKV</p>
Tag:	C-Myc/DDK
Predicted MW:	75.5 kDa
Concentration:	>0.05 µg/µL as determined by microplate BCA method
Purity:	> 80% as determined by SDS-PAGE and Coomassie blue staining
Buffer:	25 mM Tris-HCl, 100 mM glycine, pH 7.3, 10% glycerol
Preparation:	Recombinant protein was captured through anti-DDK affinity column followed by conventional chromatography steps.
Note:	For testing in cell culture applications, please filter before use. Note that you may experience some loss of protein during the filtration process.
Storage:	Store at -80°C.



[View online »](#)

Stability:	Stable for 12 months from the date of receipt of the product under proper storage and handling conditions. Avoid repeated freeze-thaw cycles.
RefSeq:	NP_061830
Locus ID:	23616
UniProt ID:	Q9Y3L3 , A0A2X0SFX7
RefSeq Size:	2592
Cytogenetics:	22q13.1
RefSeq ORF:	2103
Synonyms:	ARHGAP43
Summary:	This gene encodes a member of the Rho GTPase activating protein (RhoGAP) family. The encoded protein regulates Rac signaling and plays a role in cytoskeletal dynamics, cell motility and epithelial junction formation. This protein's association with the exocyst complex, which tethers secretory vesicles to the plasma membrane, has been demonstrated to be important in cell motility. In a distinct complex, this protein has been shown to regulate epithelial junction formation and morphogenesis. By interacting with the Plexin-D1 cell surface receptor, this protein mediates changes in the cytoskeleton in response to semaphorin binding. This protein may promote metastasis in human liver cancer cells and tissues. [provided by RefSeq, Mar 2017]

Product images:



Coomassie blue staining of purified SH3BP1 protein (Cat# [TP319860]). The protein was produced from HEK293T cells transfected with SH3BP1 cDNA clone (Cat# [RC219860]) using MegaTran 2.0 (Cat# [TT210002]).