

## Product datasheet for **TP319758SE**

### Acid sphingomyelinase (SMPD1) (NM\_000543) Human Recombinant Protein

#### Product data:

Product Type:	Recombinant Proteins
Description:	Purified recombinant protein of Human sphingomyelin phosphodiesterase 1, acid lysosomal (SMPD1), transcript variant 1, secretory expressed in HEK293T cells, 20ug
Species:	Human
Expression Host:	HEK293T
Expression cDNA Clone or AA Sequence:	>RC219758 representing NM_000543 <b>Red</b> =Cloning site <b>Green</b> =Tags(s)

MPRYGASLRQSCPRSGREQGDGTAGAPLLWMGLVLALALALALALALSDSRVLWAPAEAHPLSPQGHP  
ARLHRIVPRLRDVFGWGNLTCPICKGLFTAINLGLKKEPNVARVGSVAIKLCNLLKIAPPAVCQSIVHLF  
EDDMVEVWRRSVLSPSEACGLLLGSTCGHWDIFSSWNISLPTVPKPPKPPSPPAGAPVSRILFLDLH  
WDHDYLEGTDPCADPLCCRRGSLPPASRPGAGYWGEYSKCDLPLRTLLESLLSGLGPAGPFDMVYWTGD  
IPAHDVWHQTRQDQLRALTTVTALVRKFLGPVPVYPAVGNHSTPVNSFPPPIEGNHSSRWLYEAMAKA  
WEPWLPAAELRTLRIIGGFYALSPYPGLRLISLNMNFCRENFLLINSTDPAGQLQWLVGELQAAEDRGD  
KVHIIGHIPPGHCLKSWSWNYRIVARYENTLAAQFFGHVDFEFVYDEETLSRPLAVAFAPSATTY  
IGLNPGYRVYQIDGNYSGSSHWLDHETYILNLTQANIPGAIPHWQLLYRARETYGLPNTLPTAWHNLVY  
RMRGDMQLFQTFWFLYHKGHPPEPCGTPCRLATLCAQLSARADSPALCRHLMPLDGSLEAQSLWPRPLF  
C

**TRTRPLEQKLISEEDLAANDILDYKDDDDKV**

Tag:	C-Myc/DDK
Predicted MW:	68.8 kDa
Concentration:	>50 ug/mL as determined by microplate Bradford method
Purity:	> 80% as determined by SDS-PAGE and Coomassie blue staining
Buffer:	25mM Tris-HCl, pH7.3, 100mM glycine, 10% glycerol
Note:	For culture applications, please filter before use. Note that you may experience some loss of protein during the filtration process.
Storage:	Store at -80°C after receiving vials.
Stability:	Stable for at least 1 year from receipt of products under proper storage and handling conditions. Avoid repeated freeze-thaw cycles.



[View online »](#)

RefSeq: [NP\\_000534](#)

Locus ID: 6609

UniProt ID: [P17405](#), [Q59EN6](#)

RefSeq Size: 2473

Cytogenetics: 11p15.4

RefSeq ORF: 1893

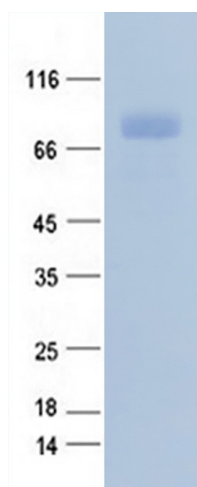
Synonyms: ASM; ASMASE; NPD

**Summary:** The protein encoded by this gene is a lysosomal acid sphingomyelinase that converts sphingomyelin to ceramide. The encoded protein also has phospholipase C activity. Defects in this gene are a cause of Niemann-Pick disease type A (NPA) and Niemann-Pick disease type B (NPB). Multiple transcript variants encoding different isoforms have been identified. [provided by RefSeq, Jul 2010]

**Protein Families:** Druggable Genome, Transmembrane

**Protein Pathways:** Lysosome, Metabolic pathways, Sphingolipid metabolism

### Product images:



Coomassie blue staining of purified SMPD1 protein (Cat #TP319758SE). The protein was produced from mammalian cells transfected with SMPD1 cDNA clone (Cat #[RC219758]).