

## Product datasheet for **TP319734M**

### GnRH (GNRH1) (NM\_001083111) Human Recombinant Protein

#### Product data:

Product Type:	Recombinant Proteins
Description:	Recombinant protein of human gonadotropin-releasing hormone 1 (luteinizing-releasing hormone) (GNRH1), transcript variant 2, 100 µg
Species:	Human
Expression Host:	HEK293T
Expression cDNA Clone or AA Sequence:	>RC219734 protein sequence <b>Red</b> =Cloning site <b>Green</b> =Tags(s)
	MKPIQKLLAGLILLTWCVEGCSSQHWSYGLRPGGKRDAENLIDSFQEIVKEVGQLAETQRFECTTHQPRS PLRDLKGALESLEEETGQKKI
	<b>TRTRPLEQKLISEEDLAANDILDYKDDDDKV</b>
Tag:	C-Myc/DDK
Predicted MW:	7.8 kDa
Concentration:	>0.05 µg/µL as determined by microplate BCA method
Purity:	> 80% as determined by SDS-PAGE and Coomassie blue staining
Buffer:	25 mM Tris-HCl, 100 mM glycine, pH 7.3, 10% glycerol
Preparation:	Recombinant protein was captured through anti-DDK affinity column followed by conventional chromatography steps.
Note:	For testing in cell culture applications, please filter before use. Note that you may experience some loss of protein during the filtration process.
Storage:	Store at -80°C.
Stability:	Stable for 12 months from the date of receipt of the product under proper storage and handling conditions. Avoid repeated freeze-thaw cycles.
RefSeq:	<a href="#">NP_001076580</a>
Locus ID:	2796
UniProt ID:	<a href="#">P01148</a>
RefSeq Size:	1297



[View online »](#)

Cytogenetics: 8p21.2

RefSeq ORF: 276

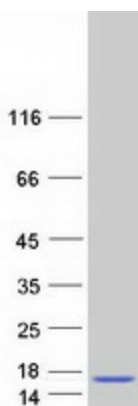
Synonyms: GNRH; GRH; LHRH; LNRH

**Summary:** This gene encodes a preproprotein that is proteolytically processed to generate a peptide that is a member of the gonadotropin-releasing hormone (GnRH) family of peptides. Alternative splicing results in multiple transcript variants, at least one of which is secreted and then cleaved to generate gonadoliberin-1 and GnRH-associated peptide 1. Gonadoliberin-1 stimulates the release of luteinizing and follicle stimulating hormones, which are important for reproduction. Mutations in this gene are associated with hypogonadotropic hypogonadism. [provided by RefSeq, Nov 2015]

**Protein Families:** Druggable Genome, Secreted Protein

**Protein Pathways:** GnRH signaling pathway

### Product images:



Coomassie blue staining of purified GNRH1 protein (Cat# [TP319734]). The protein was produced from HEK293T cells transfected with GNRH1 cDNA clone (Cat# [RC219734]) using MegaTran 2.0 (Cat# [TT210002]).