

## Product datasheet for **TP319709**

### CDC42SE1 (NM\_020239) Human Recombinant Protein

#### Product data:

Product Type:	Recombinant Proteins
Description:	Recombinant protein of human CDC42 small effector 1 (CDC42SE1), transcript variant 2, 20 µg
Species:	Human
Expression Host:	HEK293T
Expression cDNA Clone or AA Sequence:	>RC219709 protein sequence <b>Red</b> =Cloning site <b>Green</b> =Tags(s)
	MSEFWHKLGCCVVEKPQPKKKRRRIDRTMIGEPMNFVHLTHIGSGEMGAGDGLAMTGAVQEQMRSKGNRD RPWSNSRGL
	<b>TRTRPLEQKLISEEDLAANDILDYKDDDDKV</b>
Tag:	C-Myc/DDK
Predicted MW:	8.7 kDa
Concentration:	>0.05 µg/µL as determined by microplate BCA method
Purity:	> 80% as determined by SDS-PAGE and Coomassie blue staining
Buffer:	25 mM Tris-HCl, 100 mM glycine, pH 7.3, 10% glycerol
Preparation:	Recombinant protein was captured through anti-DDK affinity column followed by conventional chromatography steps.
Note:	For testing in cell culture applications, please filter before use. Note that you may experience some loss of protein during the filtration process.
Storage:	Store at -80°C.
Stability:	Stable for 12 months from the date of receipt of the product under proper storage and handling conditions. Avoid repeated freeze-thaw cycles.
RefSeq:	<a href="#">NP_064624</a>
Locus ID:	56882
UniProt ID:	<a href="#">Q9NRR8</a>
RefSeq Size:	3057
Cytogenetics:	1q21.3



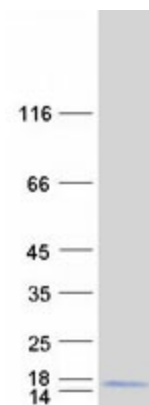
[View online »](#)

RefSeq ORF: 237

Synonyms: SCIP1; SPEC1

**Summary:** Probably involved in the organization of the actin cytoskeleton by acting downstream of CDC42, inducing actin filament assembly. Alters CDC42-induced cell shape changes. In activated T-cells, may play a role in CDC42-mediated F-actin accumulation at the immunological synapse. May play a role in early contractile events in phagocytosis in macrophages.[UniProtKB/Swiss-Prot Function]

### Product images:



Coomassie blue staining of purified CDC42SE1 protein (Cat# TP319709). The protein was produced from HEK293T cells transfected with CDC42SE1 cDNA clone (Cat# [RC219709]) using MegaTran 2.0 (Cat# [TT210002]).