

## Product datasheet for **TP319689**

### Galectin 10 (CLC) (NM\_001828) Human Recombinant Protein

#### Product data:

Product Type:	Recombinant Proteins
Description:	Recombinant protein of human Charcot-Leyden crystal protein (CLC), 20 µg
Species:	Human
Expression Host:	HEK293T
Expression cDNA Clone or AA Sequence:	>RC219689 representing NM_001828 <b>Red</b> =Cloning site <b>Green</b> =Tags(s)  MSLLPVPYTEAASLSTGSTVTIKGRPLVCFLNEPYLQVDFHTEMKEESDIVFHFQVCFGRVVMNSREYGAWKQQVESKNMPFQDGGQEFELSSISVLPDKYQVMVNGQSSYTFDHRIPKPEAVKMVQVWRDISLTKFNVSYLKR  <b>TRTRPLEQKLISEEDLAANDILDYKDDDDKV</b>
Tag:	C-Myc/DDK
Predicted MW:	16.3 kDa
Concentration:	>0.05 µg/µL as determined by microplate BCA method
Purity:	> 80% as determined by SDS-PAGE and Coomassie blue staining
Buffer:	25 mM Tris-HCl, 100 mM glycine, pH 7.3, 10% glycerol
Preparation:	Recombinant protein was captured through anti-DDK affinity column followed by conventional chromatography steps.
Note:	For testing in cell culture applications, please filter before use. Note that you may experience some loss of protein during the filtration process.
Storage:	Store at -80°C.
Stability:	Stable for 12 months from the date of receipt of the product under proper storage and handling conditions. Avoid repeated freeze-thaw cycles.
RefSeq:	<a href="#">NP_001819</a>
Locus ID:	1178
UniProt ID:	<a href="#">Q05315</a>
RefSeq Size:	641



[View online »](#)

Cytogenetics: 19q13.2

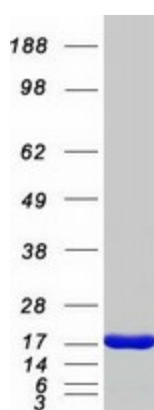
RefSeq ORF: 426

Synonyms: Gal-10; GAL10; LGALS10; LGALS10A; LPPL\_HUMAN

**Summary:** Lysophospholipases are enzymes that act on biological membranes to regulate the multifunctional lysophospholipids. The protein encoded by this gene is a lysophospholipase expressed in eosinophils and basophils. It hydrolyzes lysophosphatidylcholine to glycerophosphocholine and a free fatty acid. This protein may possess carbohydrate or IgE-binding activities. It is both structurally and functionally related to the galectin family of beta-galactoside binding proteins. It may be associated with inflammation and some myeloid leukemias. [provided by RefSeq, Jul 2008]

**Protein Families:** Secreted Protein

### Product images:



Coomassie blue staining of purified CLC protein (Cat# TP319689). The protein was produced from HEK293T cells transfected with CLC cDNA clone (Cat# [RC219689]) using MegaTran 2.0 (Cat# [TT210002]).