

## Product datasheet for **TP319661M**

### Junctophilin 2 (JPH2) (NM\_020433) Human Recombinant Protein

#### Product data:

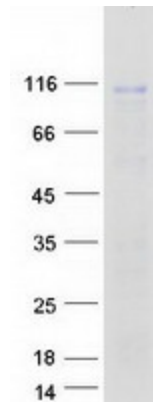
Product Type:	Recombinant Proteins
Description:	Recombinant protein of human junctophilin 2 (JPH2), transcript variant 1, 100 µg
Species:	Human
Expression Host:	HEK293T
Expression cDNA Clone or AA Sequence:	>RC219661 representing NM_020433 <b>Red</b> =Cloning site <b>Green</b> =Tags(s)  MSGGRFDFDDGGAYCGGWEGGKAHGHGLCTGPKGQGEYSGSWNFGFEVAGVYTWPSGNTFEGYWSQGKRH GLGIETKGRWLYKGEWTHGFKGRYGRIRQSSSSGAKYEGTWNNGLQDGYGTETYADGGTYQGQFTNGMRHG YGVRSVPYGMVVVRSPLRTSLSSLRSEHSNGTVAPDSPASDGPALPSPAIPRGGFALSLLANAEA AARAPKGGGLFQRGALLGKLRAESRTSVGSQRSRVSFLKSDLSSGASDAASTASLGAAEGADEAAPFE ADIDATTTETYMGWEKNDKRSFGVSRSSGLRYEGEWLDNLRHGYGCTTLPDGHREEGKYRHNVLVKDT KRRMLQLKSNKVRQKVEHSVEGAQRAAAIARQKAEIAASRTSHAKAKAEAAEQAAALANQESNIARTLAR ELAPDFYQPGPEYQKRLLQEILENSESLEPPDRGAGAAGLPQPPRESPQLHERETPRPEGGSPSPAGT PPQPKRPRPGVSKDGLLSPGAWNGEPSGEGSRSVTPSEGAGRRSPARPATERMAIEALQAPPAPSREPEV ALYQGYHSYAVRTTPPEPPPFEDQPEPEVSGSESAPSSPATAPLQAPTTLRGPEPARETPAKLEPKPIIPK AEPRAKARKTEARGLTKAGAKKKARKEAALAAEAEVEVEVPNTILICMVILLNIGLAILFVHLLT  <b>TRTRPLEQKLISEEDLAANDILDYKDDDDKV</b>
Tag:	C-Myc/DDK
Predicted MW:	74 kDa
Concentration:	>0.05 µg/µL as determined by microplate BCA method
Purity:	> 80% as determined by SDS-PAGE and Coomassie blue staining
Buffer:	25 mM Tris-HCl, 100 mM glycine, pH 7.3, 10% glycerol
Preparation:	Recombinant protein was captured through anti-DDK affinity column followed by conventional chromatography steps.
Note:	For testing in cell culture applications, please filter before use. Note that you may experience some loss of protein during the filtration process.
Storage:	Store at -80°C.



[View online »](#)

<b>Stability:</b>	Stable for 12 months from the date of receipt of the product under proper storage and handling conditions. Avoid repeated freeze-thaw cycles.
<b>RefSeq:</b>	<a href="#">NP_065166</a>
<b>Locus ID:</b>	57158
<b>UniProt ID:</b>	<a href="#">Q9BR39</a> , <a href="#">Q86VZ3</a>
<b>RefSeq Size:</b>	4802
<b>Cytogenetics:</b>	20q13.12
<b>RefSeq ORF:</b>	2088
<b>Synonyms:</b>	CMH17; JP-2; JP2
<b>Summary:</b>	Junctional complexes between the plasma membrane and endoplasmic/sarcoplasmic reticulum are a common feature of all excitable cell types and mediate cross talk between cell surface and intracellular ion channels. The protein encoded by this gene is a component of junctional complexes and is composed of a C-terminal hydrophobic segment spanning the endoplasmic/sarcoplasmic reticulum membrane and a remaining cytoplasmic domain that shows specific affinity for the plasma membrane. This gene is a member of the junctophilin gene family. Alternative splicing has been observed at this locus and two variants encoding distinct isoforms are described. [provided by RefSeq, Jul 2008]
<b>Protein Families:</b>	Transmembrane

### Product images:



Coomassie blue staining of purified JPH2 protein (Cat# [TP319661]). The protein was produced from HEK293T cells transfected with JPH2 cDNA clone (Cat# [RC219661]) using MegaTran 2.0 (Cat# [TT210002]).