

Product datasheet for TP319661L

Junctophilin 2 (JPH2) (NM_020433) Human Recombinant Protein

Product data:

Product Type: Recombinant Proteins

Description: Recombinant protein of human junctophilin 2 (JPH2), transcript variant 1, 1 mg

Species: Human

Expression Host: HEK293T

Expression cDNA Clone or AA Sequence: >RC219661 representing NM_020433

Red=Cloning site Green=Tags(s)

MSGGRFDFDDGGAYCGGWEGGKAHGHGLCTGPKGQGEYSGSWNFGFEVAGVYTWPSGNTFEGYWSQGKRH
GLGIETKGRWLYKGEWTHGFKGRYGRIRQSSSSGAKYEGTWNNGLQDGYGTETYADGGTYQGQFTNGMRHG
YGVVRQSVPYGMAVVRSPLRTSLSSLRSEHSNGTVAPDSPASDGPALPSPAIPRGGFALSLLANAEA
AARAPKGGGLFQRGALLGKLRAESRTSVGSQRSRVSFLKSDLSSGASDAASTASLGAAEGADEAAPFE
ADIDATTTETYMGWEKNDKRSGFGVSRSSGLRYEGEWLDNLRHGYGCTTLPDGHREEGKYRHNVLVKDT
KRRMLQLKSNKVRQKVEHSVEGAQRAAAIARQKAEIAASRTSHAKAKAEAAEQAALANQESNIARTLAR
ELAPDFYQPGPEYQKRLLQEILENSESLEPPDRGAGAAGLPQPPRESPQLHERETPRPEGGSPSPAGT
PPQPKRPRPGVSKDGLLSPGAWNGEPSGEGSRSVTPSEGAGRRSPARPATERMAIEALQAPPAPSREPEV
ALYQGYHSYAVRTTPPEPPPFEDQPEPEVSGSESAPSSPATAPLQAPTLRGPEPARETPAKLEPKPIIPK
AEPRAKARKTEARGLTKAGAKKKARKEAALAAEAEEVEVEVPNTILICMVILLNIGLAILFVHLLT

TRTRPLEQKLISEEDLAANDILDYKDDDDKV

Tag: C-Myc/DDK

Predicted MW: 74 kDa

Concentration: >0.05 µg/µL as determined by microplate BCA method

Purity: > 80% as determined by SDS-PAGE and Coomassie blue staining

Buffer: 25 mM Tris-HCl, 100 mM glycine, pH 7.3, 10% glycerol

Preparation: Recombinant protein was captured through anti-DDK affinity column followed by conventional chromatography steps.

Note: For testing in cell culture applications, please filter before use. Note that you may experience some loss of protein during the filtration process.

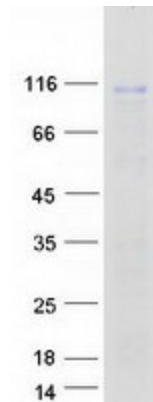
Storage: Store at -80°C.



[View online »](#)

Stability:	Stable for 12 months from the date of receipt of the product under proper storage and handling conditions. Avoid repeated freeze-thaw cycles.
RefSeq:	NP_065166
Locus ID:	57158
UniProt ID:	Q9BR39 , Q86VZ3
RefSeq Size:	4802
Cytogenetics:	20q13.12
RefSeq ORF:	2088
Synonyms:	CMH17; JP-2; JP2
Summary:	Junctional complexes between the plasma membrane and endoplasmic/sarcoplasmic reticulum are a common feature of all excitable cell types and mediate cross talk between cell surface and intracellular ion channels. The protein encoded by this gene is a component of junctional complexes and is composed of a C-terminal hydrophobic segment spanning the endoplasmic/sarcoplasmic reticulum membrane and a remaining cytoplasmic domain that shows specific affinity for the plasma membrane. This gene is a member of the junctophilin gene family. Alternative splicing has been observed at this locus and two variants encoding distinct isoforms are described. [provided by RefSeq, Jul 2008]
Protein Families:	Transmembrane

Product images:



Coomassie blue staining of purified JPH2 protein (Cat# [TP319661]). The protein was produced from HEK293T cells transfected with JPH2 cDNA clone (Cat# [RC219661]) using MegaTran 2.0 (Cat# [TT210002]).