

Product datasheet for TP319661

Junctophilin 2 (JPH2) (NM_020433) Human Recombinant Protein

Product data:

Product Type:	Recombinant Proteins
Description:	Recombinant protein of human junctophilin 2 (JPH2), transcript variant 1, 20 µg
Species:	Human
Expression Host:	HEK293T
Expression cDNA Clone or AA Sequence:	>RC219661 representing NM_020433 Red =Cloning site Green =Tags(s)
	MSGGRFDFDDGGAYCGGWEGGKAHGHGLCTGPKGQGEYSGSWNFGFEVAGVYTWPSGNTFEGYWSQGKRH GLGIETKGRWLYKGEWTHGFKGRYGRIRQSSSSGAKYEGTWNNGLQDGYGTETYADGGTYQGQFTNGMRHG YGVRSVPYGMVVVRSPLRTSLSSLRSEHSNGTVAPDSPASDGPALPSPAIPRGGFALSLLANAEA AARAPKGGGLFQRGALLGKLRAESRTSVGSQRSRVSFLKSDLSSGASDAASTASLGAAEGADEAAPFE ADIDATTTETYMGWEKNDKRSFGVSRSSGLRYEGEWLDNLRHGYGCTTLPDGHREEGKYRHNVLVKDT KRRMLQLKSNKVRQKVEHSVEGAQRAAAIARQKAEIAASRTSHAKAKAEAAEQAALANQESNIARTLAR ELAPDFYQPGPEYQKRLLQEILENSESLEPPDRGAGAAGLPQPPRESPQLHERETPRPEGGSPSPAGT PPQPKRPRPGVSKDGLLSPGAWNGEPSGEGSRSVTPSEGAGRRSPARPATERMAIEALQAPPAPSREPEV ALYQGYHSYAVRTTPPEPPPFEDQPEPEVSGSESAPSSPATAPLQAPTLRGPEPARETPAKLEPKPIIPK AEPRAKARKTEARGLTKAGAKKKARKEAALAAEAEVEVEVPNTILICMVILLNIGLAILFVHLLT TRTRPLEQKLISEEDLAANDILDYKDDDDKV
Tag:	C-Myc/DDK
Predicted MW:	74 kDa
Concentration:	>0.05 µg/µL as determined by microplate BCA method
Purity:	> 80% as determined by SDS-PAGE and Coomassie blue staining
Buffer:	25 mM Tris-HCl, 100 mM glycine, pH 7.3, 10% glycerol
Preparation:	Recombinant protein was captured through anti-DDK affinity column followed by conventional chromatography steps.
Note:	For testing in cell culture applications, please filter before use. Note that you may experience some loss of protein during the filtration process.
Storage:	Store at -80°C.



[View online »](#)

Stability: Stable for 12 months from the date of receipt of the product under proper storage and handling conditions. Avoid repeated freeze-thaw cycles.

RefSeq: [NP_065166](#)

Locus ID: 57158

UniProt ID: [Q9BR39](#), [Q86VZ3](#)

RefSeq Size: 4802

Cytogenetics: 20q13.12

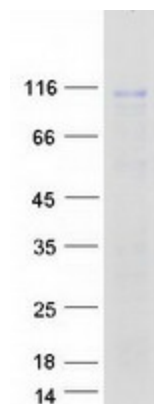
RefSeq ORF: 2088

Synonyms: CMH17; JP-2; JP2

Summary: Junctional complexes between the plasma membrane and endoplasmic/sarcoplasmic reticulum are a common feature of all excitable cell types and mediate cross talk between cell surface and intracellular ion channels. The protein encoded by this gene is a component of junctional complexes and is composed of a C-terminal hydrophobic segment spanning the endoplasmic/sarcoplasmic reticulum membrane and a remaining cytoplasmic domain that shows specific affinity for the plasma membrane. This gene is a member of the junctophilin gene family. Alternative splicing has been observed at this locus and two variants encoding distinct isoforms are described. [provided by RefSeq, Jul 2008]

Protein Families: Transmembrane

Product images:



Coomassie blue staining of purified JPH2 protein (Cat# TP319661). The protein was produced from HEK293T cells transfected with JPH2 cDNA clone (Cat# [RC219661]) using MegaTran 2.0 (Cat# [TT210002]).