

Product datasheet for **TP319629L**

CYLD (NM_015247) Human Recombinant Protein

Product data:

Product Type: Recombinant Proteins
Description: Recombinant protein of human cylindromatosis (turban tumor syndrome) (CYLD), transcript variant 1, 1 mg
Species: Human
Expression Host: HEK293T
Expression cDNA Clone or AA Sequence: >RC219629 representing NM_015247
Red=Cloning site Green=Tags(s)

MSSGLWSQEKVTSFYWEERIFYLLQECVTDKQTQKLLKVPKGSIGQYIQDRSVGHSRIPSAKGKKNQI
 GLKILEQPHAVLFVDEKDVVEINEKFTELLAITNCEERFSLFKNRNRSLKGLQIDVGCVPKVQLRSGEE
 KFPGVVFRFRGPLLAERTVSGIFFGVELLEEGRGQGFDTGVYQKQLFQCDEDCGVFVALDKLELIEDDDT
 ALESYAGPGDTMQVELPPEINRSVSLKVGETIESGTVIFCDVLPGKESLGYFVGVDMDNPIGNWDGRF
 DGVQLCSFACVESTILLHINDIIPALSESVTQERRPPKLAFFMSRGGDKGSSSHNPKATGSTDGPNRN
 RSELYTLNGSSVDSQPQSKSKNTWYIDEVAEDPAKSLTEISTDFDRSSPPLQPPPVSNTTENRFHSLP
 FSLTKMPNTNGSIGHSPLSLSAQSVMEELNTPVQESPLAMPPGNSHGLEVGS LAEVKENPPFYGVIRW
 IGQPPGLNEVLGAGLELEDECAGCTDGTFRGTRYFTCALKKALFVKLKSCRPDSTRFASLQPVSNQIERCNS
 LAFGGYLSEVVEENTPPKMEKEGLEIMIGKKKGIQGHYNVSCYLDSTLFLCLFAFSSVLDTVLLRPKEKNDV
 EYYSETQELLRTEIVNPLRIYGYVCATKIMKLRKILEKVEAASGFTSEEKDPPEEFLNLFHHILRVEPLL
 KIRSAGQKVQDCYFYQIFMEKNEKVGVPITIQQLLEWSFINSNLKFAEAPSCLIIQMPFRGKDFKLFKKIF
 PSLELNITDLEDTPRQCRCGLAMYECRECYDDPDISAGKIKQFCKTCNTQVHLHPKRLNHKYNPVSL
 PKDLPDWDWRHGCIPCQNMELFAVLCIETSHYVAFVKYKDDSAWLFFDSMADRDGGQNGFNIPQVTPCP
 EVGEYLMKSLEDLHSLDSRRIQGCARRLLCDAYMCMYQSPTMSLYK

TRTRPLEQKLISEEDLAANDILDYKDDDDKV

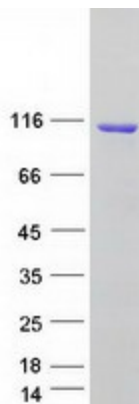
Tag: C-Myc/DDK
Predicted MW: 107.1 kDa
Concentration: >0.05 µg/µL as determined by microplate BCA method
Purity: > 80% as determined by SDS-PAGE and Coomassie blue staining
Buffer: 25 mM Tris-HCl, 100 mM glycine, pH 7.3, 10% glycerol



[View online »](#)

Preparation:	Recombinant protein was captured through anti-DDK affinity column followed by conventional chromatography steps.
Note:	For testing in cell culture applications, please filter before use. Note that you may experience some loss of protein during the filtration process.
Storage:	Store at -80°C.
Stability:	Stable for 12 months from the date of receipt of the product under proper storage and handling conditions. Avoid repeated freeze-thaw cycles.
RefSeq:	NP_056062
Locus ID:	1540
UniProt ID:	Q9NQC7
RefSeq Size:	5371
Cytogenetics:	16q12.1
RefSeq ORF:	2868
Synonyms:	BRSS; CDMT; CYLD1; CYLDI; EAC; FTDALS8; MFT; MFT1; SBS; TEM; USPL2
Summary:	This gene encodes a cytoplasmic protein with three cytoskeletal-associated protein-glycine-conserved (CAP-GLY) domains that functions as a deubiquitinating enzyme. Mutations in this gene have been associated with cylindromatosis, multiple familial trichoepithelioma, and Brooke-Spiegler syndrome. Alternate transcriptional splice variants, encoding different isoforms, have been characterized. [provided by RefSeq, Jul 2008]
Protein Families:	Druggable Genome
Protein Pathways:	RIG-I-like receptor signaling pathway

Product images:



Coomassie blue staining of purified CYLD protein (Cat# [TP319629]). The protein was produced from HEK293T cells transfected with CYLD cDNA clone (Cat# [RC219629]) using MegaTran 2.0 (Cat# [TT210002]).