

Product datasheet for TP319582M

NAALAD2 (NM_005467) Human Recombinant Protein

Product data:

Product Type:	Recombinant Proteins
Description:	Recombinant protein of human N-acetylated alpha-linked acidic dipeptidase 2 (NAALAD2), 100 µg
Species:	Human
Expression Host:	HEK293T
Expression cDNA Clone or AA Sequence:	>RC219582 protein sequence Red=Cloning site Green=Tags(s)

MAESRGRLYLWMCLAAALASFLMGFMVGVFIKPLKETTTSVRYHQSIKWLKLVSEMKAEINIKSFLRSFTKL
PHLAGTEQNFLAKKIQTQWKKFGLDSAKLIHYDVLLSYPNETNANYISIVDEHETEIFKTSYLEPPPDG
YENVTNIVPPYNAFSAQGMPEGDLVYVNYARTEDFFKLEREMGINCTGKIVIARYGKIFRGNKVKNAMLA
GAIGIILYSDPADYFAPEVQYPYKGNLPGTAAQRGNVNLNGAGDPLTPGYPAKEYTFRLDVEEGVGIP
RIPVHPIGYNDAEILLRYLGGIAPPDKSWKGALNVSYSIGPGFTGSDSFRKVRMHVYNINKITRIYNVVG
TIRGSVEPDRYVILGGHRDSWVFGAIDPTSGVAVLQEIARSFGKLMKSGWRPRRTIIFASWDAEEFGLLG
STEWAEENVKILQERSIAYINS DSSI EGN YTLRVDCTPLLYQLVYKLTKEIPSPDDGFESKSLYESWLEK
DPSPENKNLPRINKLGS GSDFEAYFQRLGIASGRARYTKNKKTDKYSSYPVYHTIYETFELVEKFYDPTF
KKQLSVAQLRGALVYELVDSKIIPFNIQDYAEALKNYAASIYNLSKKHDQQLTDHGVSFDSLFSAVKNFS
EAASDFHKRLIQVDLNNPIAVRMMNDQLMLLERAFIDPLGLPGKLFYRHIIFAPSSH NKYAGESFPPIYD
AIFDIENKANSRLAWKEVKKHISIAAFTIQAAAGTLKEVL

TRTRPLEQKLISEEDLAANDILDYKDDDDKV

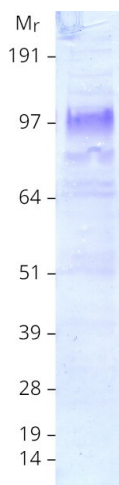
Tag:	C-Myc/DDK
Predicted MW:	83.4 kDa
Concentration:	>0.05 µg/µL as determined by microplate BCA method
Purity:	> 80% as determined by SDS-PAGE and Coomassie blue staining
Buffer:	25 mM Tris-HCl, 100 mM glycine, pH 7.3, 10% glycerol
Preparation:	Recombinant protein was captured through anti-DDK affinity column followed by conventional chromatography steps.
Note:	For testing in cell culture applications, please filter before use. Note that you may experience some loss of protein during the filtration process.



[View online »](#)

Storage:	Store at -80°C.
Stability:	Stable for 12 months from the date of receipt of the product under proper storage and handling conditions. Avoid repeated freeze-thaw cycles.
RefSeq:	NP_005458
Locus ID:	10003
UniProt ID:	Q9Y3Q0
RefSeq Size:	3196
Cytogenetics:	11q14.3
RefSeq ORF:	2220
Synonyms:	GCPIII; GPCIII; NAADALASE2; NAALADASE2
Summary:	This gene is a member of the N-acetylated alpha-linked acidic dipeptidase (NAALADase) gene family. The representative member of this family is the gene encoding human prostate-specific membrane antigen (PSM), which is a marker of prostatic carcinomas and is the first to be shown to possess NAALADase activity. NAALADase cleaves N-acetyl-L-aspartate-L-glutamate (NAAG), which is a neuropeptide expressed both in the central nervous systems and in the periphery and is thought to function as a neurotransmitter. The product of this gene is a type II integral membrane protein. Transient transfection of this gene confers both NAALADase and dipetidyl peptidase IV activities to mammalian cells. This gene is highly expressed in ovary and testis as well as within discrete brain areas. Two transcript variants encoding different isoforms have been found for this gene. [provided by RefSeq, Jul 2014]
Protein Families:	Druggable Genome, Transmembrane

Product images:



Coomassie blue staining of purified NAALAD2 protein (Cat# [TP319582]). The protein was produced from HEK293T cells transfected with NAALAD2 cDNA clone (Cat# [RC219582]) using MegaTran 2.0 (Cat# [TT210002]).