

Product datasheet for **TP319578M**

EEF1G (NM_001404) Human Recombinant Protein

Product data:

Product Type:	Recombinant Proteins
Description:	Recombinant protein of human eukaryotic translation elongation factor 1 gamma (EEF1G), 100 µg
Species:	Human
Expression Host:	HEK293T
Expression cDNA Clone or AA Sequence:	>RC219578 representing NM_001404 Red=Cloning site Green=Tags(s)

MAAGTLYTYPENWRAFKALIAAQYSGAQVRVLSAPPHFHFGQTNRTPEFLRKFPAGKVPAFEGDDGFCVF
ESNAIAYYVSNEELRGSTPEAAAQVQWVSFADSDIVPPASTWVFPTLGIMHHNKQATENAKEEVRRILG
LLDAYLKTRTFLVGERVTLADITVVCTLLWLYKQVLEPSFRQAFPNTNRWFLTCINQPQFRAVLGEVKLC
EKMAQFDAKKFAETQPKKDTPRKEKGSREEKQKPKQAERKEEKAAAPAPEEEMDECEQALAAEPKAKDPF
AHLPKSTFVLDEFKRKYSNEDTSLVALPYFWEHFDKDGWSLWYSEYRFEELTQTFMSCNLITGMFQRLD
KLRKNAFASVILFGTNNSSSISGVWVFRGQELAFPLSPDWQVDYESYTWRLDPGSEETQLTVREYFSWE
GAFQHVGVKAFNQGKIFK

TRTRPLEQKLISEEDLAANDILDYKDDDDKV

Tag:	C-Myc/DDK
Predicted MW:	49.9 kDa
Concentration:	>0.05 µg/µL as determined by microplate BCA method
Purity:	> 80% as determined by SDS-PAGE and Coomassie blue staining
Buffer:	25 mM Tris-HCl, 100 mM glycine, pH 7.3, 10% glycerol
Bioactivity:	Biolayer interferometry (BLI) assay (PMID: 26624286)
Preparation:	Recombinant protein was captured through anti-DDK affinity column followed by conventional chromatography steps.
Note:	For testing in cell culture applications, please filter before use. Note that you may experience some loss of protein during the filtration process.
Storage:	Store at -80°C.



[View online »](#)

Stability: Stable for 12 months from the date of receipt of the product under proper storage and handling conditions. Avoid repeated freeze-thaw cycles.

RefSeq: [NP_001395](#)

Locus ID: 1937

UniProt ID: [P26641](#), [Q53YD7](#)

RefSeq Size: 1429

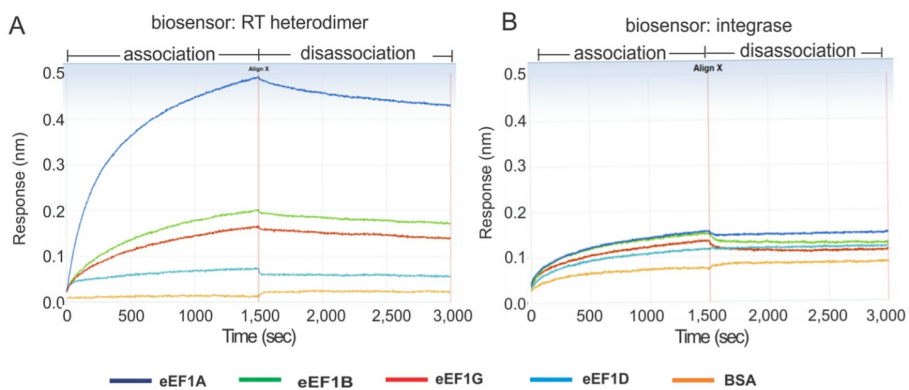
Cytogenetics: 11q12.3

RefSeq ORF: 1311

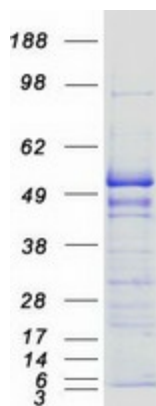
Synonyms: EF1G; GIG35

Summary: This gene encodes a subunit of the elongation factor-1 complex, which is responsible for the enzymatic delivery of aminoacyl tRNAs to the ribosome. This subunit contains an N-terminal glutathione transferase domain, which may be involved in regulating the assembly of multisubunit complexes containing this elongation factor and aminoacyl-tRNA synthetases. [provided by RefSeq, Jul 2008]

Product images:



Biolayer interferometry assays (BLI) of a biotinylated HIV RTp66/p51-loaded or integrase-loaded biosensor with 60 nM of purified eEF1A (OriGene [TP309697]), eEF1B (OriGene [TP321264]), eEF1D (OriGene [TP303202]), eEF1G (OriGene [TP319578]) or BSA as analytes. Figure cited from PLoS Pathog, PMID: 26624286



Coomassie blue staining of purified EEF1G protein (Cat# [TP319578]). The protein was produced from HEK293T cells transfected with EEF1G cDNA clone (Cat# [RC219578]) using MegaTran 2.0 (Cat# [TT210002]).