

Product datasheet for **TP319574**

Pepsin (PGA4) (NM_001079808) Human Recombinant Protein

Product data:

Product Type:	Recombinant Proteins
Description:	Recombinant protein of human pepsinogen 4, group I (pepsinogen A) (PGA4), 20 µg
Species:	Human
Expression Host:	HEK293T
Expression cDNA Clone or AA Sequence:	>Peptide sequence encoded by RC219574 Blue=ORF Red=Cloning site Green=Tag(s)

MKWLLLLGLValsecIMyKVPLIRKKSLRRTLSErGLLKDFLKKHNLNPARKYFPQWEAPTLVDEQPLE
 NYLDMEYFGTIGITPAQDFTVFDTGSSNLWVPSVYCSSLACTNHNRFNPEDSSTYQSTSETVSITYG
 TGSMTGILGYDTVQVGGISDTNQIFGLSETEPGSFLYYAPFDGILGLAYPSISSSGATPVFDNIWNQGL
 VSQDLFSVYLSADDQSGSVIFGGIDSSYYTGSLNWWVPVTVEGYWQITVDSITMNGEAIACAEGCQAIV
 DTGTSLLTGPTSPIANIQSDIGASENSDGMVVS CSAISSLPDIVFTINGVQYPVPPSAYILQSEGSCI
 SGFQGMNLPTESGELWILGDVFIRQYFTVFDRANNQVGLAPVA
 TRTRPLEQKLISEEDLAANDILDYKDDDDKV

Recombinant protein using RC219574 also available, [TP319574](#)

Tag:	C-Myc/DDK
Predicted MW:	40.3 kDa
Concentration:	>0.05 µg/µL as determined by microplate BCA method
Purity:	> 80% as determined by SDS-PAGE and Coomassie blue staining
Buffer:	25 mM Tris-HCl, 100 mM glycine, pH 7.3, 10% glycerol
Preparation:	Recombinant protein was captured through anti-DDK affinity column followed by conventional chromatography steps.
Note:	For testing in cell culture applications, please filter before use. Note that you may experience some loss of protein during the filtration process.
Storage:	Store at -80°C.
Stability:	Stable for 12 months from the date of receipt of the product under proper storage and handling conditions. Avoid repeated freeze-thaw cycles.
RefSeq:	NP_001073276


[View online »](#)

Locus ID: 643847

UniProt ID: [P0DJD7](#)

RefSeq Size: 1413

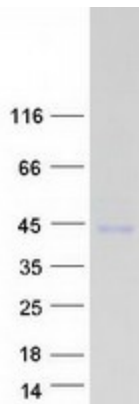
Cytogenetics: 11q12.2

RefSeq ORF: 1164

Summary: This gene encodes a protein precursor of the digestive enzyme pepsin, a member of the peptidase A1 family of endopeptidases. The encoded precursor is secreted by gastric chief cells and undergoes autocatalytic cleavage in acidic conditions to form the active enzyme, which functions in the digestion of dietary proteins. This gene is found in a cluster of related genes on chromosome 11, each of which encodes one of multiple pepsinogens. Pepsinogen levels in serum may serve as a biomarker for atrophic gastritis and gastric cancer. [provided by RefSeq, Jul 2015]

Protein Families: Druggable Genome

Product images:



Coomassie blue staining of purified PGA4 protein (Cat# TP319574). The protein was produced from HEK293T cells transfected with PGA4 cDNA clone (Cat# [RC219574]) using MegaTran 2.0 (Cat# [TT210002]).