

Product datasheet for **TP319570L**

PLCXD3 (NM_001005473) Human Recombinant Protein

Product data:

| | |
|--|--|
| Product Type: | Recombinant Proteins |
| Description: | Recombinant protein of human phosphatidylinositol-specific phospholipase C, X domain containing 3 (PLCXD3), 1 mg |
| Species: | Human |
| Expression Host: | HEK293T |
| Expression cDNA Clone or AA Sequence: | >RC219570 representing NM_001005473 Red =Cloning site Green =Tags(s) MASSQGKNEKLADWMATLPESMHSIPLTNLAIPGSHDSFSFYIDEASVGPPEQPETVQNFVSVFGTVAK KLMRKWLATQTMNFTGQLGAGIRYFDLRISTKPRDPDNELYFAHGLFSAKVNEGLEEINAFITDHHKEVV FLDFNFHYGMQKYHHEKLVQMLKDIYGNKMCPAIFAQEVSLKYLWEKDYQVLVIFYHSPVALEVPFLWPG Q MMPAPWANTTDPEKLIQFLQASITERRKKGSFFISQVVLTPKASTVVKGVASGLRETITERALPAMMQWV RTQKPGESGINIVTADFVELGDFISTVIKLNIVFDEGEANT TRTRPLEQKLISEEDLAANDILDYKDDDDKV |
| Tag: | C-Myc/DDK |
| Predicted MW: | 36.1 kDa |
| Concentration: | >0.05 µg/µL as determined by microplate BCA method |
| Purity: | > 80% as determined by SDS-PAGE and Coomassie blue staining |
| Buffer: | 25 mM Tris-HCl, 100 mM glycine, pH 7.3, 10% glycerol |
| Preparation: | Recombinant protein was captured through anti-DDK affinity column followed by conventional chromatography steps. |
| Note: | For testing in cell culture applications, please filter before use. Note that you may experience some loss of protein during the filtration process. |
| Storage: | Store at -80°C. |
| Stability: | Stable for 12 months from the date of receipt of the product under proper storage and handling conditions. Avoid repeated freeze-thaw cycles. |
| RefSeq: | <u>NP_001005473</u> |



[View online »](#)

Locus ID: 345557

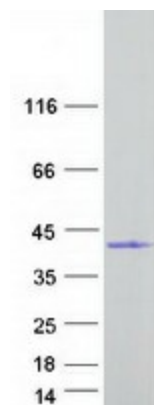
UniProt ID: [Q63HM9](#)

RefSeq Size: 7549

Cytogenetics: 5p13.1

RefSeq ORF: 963

Product images:



Coomassie blue staining of purified PLCXD3 protein (Cat# [TP319570]). The protein was produced from HEK293T cells transfected with PLCXD3 cDNA clone (Cat# [RC219570]) using MegaTran 2.0 (Cat# [TT210002]).