

Product datasheet for **TP319559L**

RBPM2 (NM_194272) Human Recombinant Protein

Product data:

Product Type:	Recombinant Proteins
Description:	Recombinant protein of human RNA binding protein with multiple splicing 2 (RBPM2), 1 mg
Species:	Human
Expression Host:	HEK293T
Expression cDNA Clone or AA Sequence:	>RC219559 representing NM_194272 Red =Cloning site Green =Tags(s)
	MSNLKPDGEHGGSTGTGSGAGSGGALEEEVRTLFLVSGLPVDIKPRELYLLFRPFKGYEGSLIKLTARQPV GFVIFDSRAGAEAAKNALNGIRFDPENPQTLRLEFAKANTKMAKSKLMATPNPSNVHPALGAHFIARDPY DLMGAALIPASPEAWAPYPLYTTELTPAISHAAFTYPTATAAAAAALHAQVRWYPSSDTTQQGWKYRQFC
	TRTRPLEQKLISEEDLAANDILDYKDDDDKV
Tag:	C-Myc/DDK
Predicted MW:	22.3 kDa
Concentration:	>0.05 µg/µL as determined by microplate BCA method
Purity:	> 80% as determined by SDS-PAGE and Coomassie blue staining
Buffer:	25 mM Tris-HCl, 100 mM glycine, pH 7.3, 10% glycerol
Preparation:	Recombinant protein was captured through anti-DDK affinity column followed by conventional chromatography steps.
Note:	For testing in cell culture applications, please filter before use. Note that you may experience some loss of protein during the filtration process.
Storage:	Store at -80°C.
Stability:	Stable for 12 months from the date of receipt of the product under proper storage and handling conditions. Avoid repeated freeze-thaw cycles.
RefSeq:	<u>NP_919248</u>
Locus ID:	348093
UniProt ID:	<u>Q6ZRY4</u>
RefSeq Size:	2019



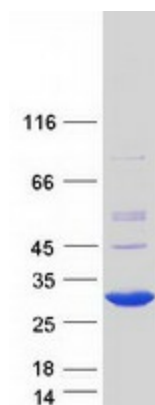
[View online »](#)

Cytogenetics: 15q22.31

RefSeq ORF: 627

Summary: The protein encoded by this gene is a member of the RNA recognition motif (RRM)-containing protein family and is involved in the development and dedifferentiation of digestive smooth muscle cells. The encoded protein functions as a homodimer and indirectly inhibits the bone morphogenetic protein pathway. [provided by RefSeq, Aug 2016]

Product images:



Coomassie blue staining of purified RBPMS2 protein (Cat# [TP319559]). The protein was produced from HEK293T cells transfected with RBPMS2 cDNA clone (Cat# [RC219559]) using MegaTran 2.0 (Cat# [TT210002]).