

## Product datasheet for **TP319555**

### LASS6 (CERS6) (NM\_203463) Human Recombinant Protein

#### Product data:

Product Type:	Recombinant Proteins
Description:	Recombinant protein of human LAG1 homolog, ceramide synthase 6 (LASS6), 20 µg
Species:	Human
Expression Host:	HEK293T
Expression cDNA Clone or AA Sequence:	>RC219555 representing NM_203463 <b>Red</b> =Cloning site <b>Green</b> =Tags(s)

MAGILAWFWNERFWLPHNVTWADLKNTEEATFPQAEDLYLAFPLAFCIFMVRLIFERFVAKPCAIALNIQ  
ANGPQIAPPNAILEKVFTAITKHPDEKRLEGLSKQLDWDVRSIQRWFRQRRNQEKPSTLTRFCESMWRF  
FYLYVFTYGVRFLKKTPLWNTRHCWYNYPYQPLTTDLHYYYILELSFYWSLMFSQFTDIKRKDFGIMFL  
HHLVSIPLITFSYVNNMARVGTLVLCLHDSADALLEAAKMANYAKFQKMCDDLFFVMFAVVFITRGLIFP  
LWVLTNTLFESEIVGPYPSWWWFNLLLLLVQGLNCFWSYLIVKIAACKAVSRGKVKDDRSDIESSSDEE  
DSEPPGKNPHTATTTNGTSGTNGYLLTGSCSMDD

**TR**TRPLEQKLISEEDLAANDILDYKDDDDKV

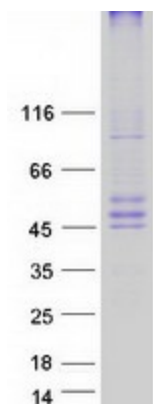
Tag:	C-Myc/DDK
Predicted MW:	44.7 kDa
Concentration:	>0.05 µg/µL as determined by microplate BCA method
Purity:	> 80% as determined by SDS-PAGE and Coomassie blue staining
Buffer:	25 mM Tris-HCl, 100 mM glycine, pH 7.3, 10% glycerol
Preparation:	Recombinant protein was captured through anti-DDK affinity column followed by conventional chromatography steps.
Note:	For testing in cell culture applications, please filter before use. Note that you may experience some loss of protein during the filtration process.
Storage:	Store at -80°C.
Stability:	Stable for 12 months from the date of receipt of the product under proper storage and handling conditions. Avoid repeated freeze-thaw cycles.
RefSeq:	<a href="#">NP_982288</a>
Locus ID:	253782



[View online »](#)

UniProt ID:	<u>Q6ZMG9</u>
RefSeq Size:	6259
Cytogenetics:	2q24.3
RefSeq ORF:	1152
Synonyms:	CERS5; LASS6
Summary:	May be involved in sphingolipid synthesis or its regulation.[UniProtKB/Swiss-Prot Function]
Protein Families:	Druggable Genome, Transmembrane

### Product images:



Coomassie blue staining of purified CERS6 protein (Cat# TP319555). The protein was produced from HEK293T cells transfected with CERS6 cDNA clone (Cat# [RC219555]) using MegaTran 2.0 (Cat# [TT210002]).