

Product datasheet for **TP319533M**

ODF3 (NM_053280) Human Recombinant Protein

Product data:

Product Type: Recombinant Proteins

Description: Recombinant protein of human outer dense fiber of sperm tails 3 (ODF3), 100 µg

Species: Human

Expression Host: HEK293T

Expression cDNA Clone
or AA Sequence: >RC219533 protein sequence
Red=Cloning site **Green**=Tags(s)

MTEEVWMGTWRPHRPRGPIMALYSSPGPKYLIPPTTGFMKHTPTKLRAPAYSFRGAPMLLAENCSPGPRY
NVNPKILRTGKDLGPAYSILGRYQTKTMLTPGPGDYFPEKSTKYVFDSAPSHSISARTKAFRVDSTPGPA
AYMLPMVMGPNTVGKASQPSFSIKGRSKLGGFSDDLHKTPGPAAYRQTDVVRVTKFKAPQYTMARVEPPG
DKTLKPGPGAHSPEKVTLTKPCAPVVTFGIKHSDYMTPLLVDVE

TRTRPLEQKLISEEDLAANDILDYKDDDDKV

Tag: C-Myc/DDK

Predicted MW: 27.5 kDa

Concentration: >0.05 µg/µL as determined by microplate BCA method

Purity: > 80% as determined by SDS-PAGE and Coomassie blue staining

Buffer: 25 mM Tris-HCl, 100 mM glycine, pH 7.3, 10% glycerol

Preparation: Recombinant protein was captured through anti-DDK affinity column followed by conventional chromatography steps.

Note: For testing in cell culture applications, please filter before use. Note that you may experience some loss of protein during the filtration process.

Storage: Store at -80°C.

Stability: Stable for 12 months from the date of receipt of the product under proper storage and handling conditions. Avoid repeated freeze-thaw cycles.

RefSeq: [NP_444510](#)

Locus ID: 113746

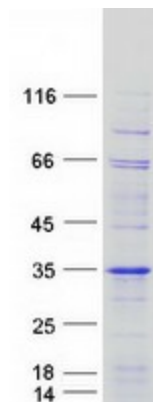
UniProt ID: [Q96PU9](#)



[View online »](#)

RefSeq Size:	1295
Cytogenetics:	11p15.5
RefSeq ORF:	762
Synonyms:	CT135; SHIPPO1; TISP50
Summary:	ODF3 is a component of sperm flagella outer dense fibers, which add stiffness, elastic recoil, and protection against shearing forces during sperm movement.[supplied by OMIM, Apr 2004]

Product images:



Coomassie blue staining of purified ODF3 protein (Cat# [TP319533]). The protein was produced from HEK293T cells transfected with ODF3 cDNA clone (Cat# [RC219533]) using MegaTran 2.0 (Cat# [TT210002]).