

Product datasheet for **TP319514M**

TGF beta Receptor I (TGFB1) (NM_004612) Human Recombinant Protein

Product data:

Product Type:	Recombinant Proteins
Description:	Recombinant protein of human transforming growth factor, beta receptor 1 (TGFB1), transcript variant 1, 100 µg
Species:	Human
Expression Host:	HEK293T
Expression cDNA Clone or AA Sequence:	>RC219514 representing NM_004612 Red =Cloning site Green =Tags(s)

MEAAVAAPRPRLLLLLVAAAAAAAAAALLPGATALQCFCHLCTKDNFTCVTDGLCFVSVTETTDKVIHNSM
CIAEIDLIPDRPFVFCAPSSKTGSVTTTYCCNQDHCNKIELPTTVKSSPGLGPVELAAVIAGPVCFCIS
LMLMVYICHNRTVIHHRVPNEEDPSLDRPFISEGTTLKDLIYDMTTSGSGSLPLLQRTIARTIVLQES
IGKGRFGEVWRGKWRGEEVAVKIFSSREERSWFREAEIYQTVMLRHENILGFIAADNKDNGTWTQLWLVS
DYHEHGSLFDYLNRYTVTVEGMIKLALSTASGLAHLHMEIVGTQGKPAIAHRDLKSKNILVKKNGTCCIA
DLGLAVRHDSATDTIDIAPNHRVGTKRYMAPEVLDDSSINMKHFESFKRADIYAMGLVFEIARRCSIGGI
HEDYQLPYDLVPSDPSVEEMRKVCEQKLRPNIPNRWQSCEALRVMAKIMRECWYANGAARLTALRIKK
TLSQLSQEGIKM

TRTRPLEQKLISEEDLAANDILDYKDDDDKV

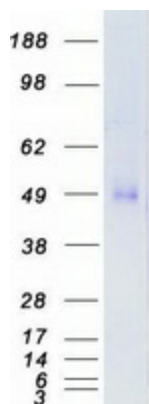
Tag:	C-Myc/DDK
Predicted MW:	53.6 kDa
Concentration:	>0.05 µg/µL as determined by microplate BCA method
Purity:	> 80% as determined by SDS-PAGE and Coomassie blue staining
Buffer:	25 mM Tris-HCl, 100 mM glycine, pH 7.3, 10% glycerol
Preparation:	Recombinant protein was captured through anti-DDK affinity column followed by conventional chromatography steps.
Note:	For testing in cell culture applications, please filter before use. Note that you may experience some loss of protein during the filtration process.
Storage:	Store at -80°C.



[View online »](#)

Stability:	Stable for 12 months from the date of receipt of the product under proper storage and handling conditions. Avoid repeated freeze-thaw cycles.
RefSeq:	NP_004603
Locus ID:	7046
UniProt ID:	P36897 , Q5T7S2 , B4DXN7
RefSeq Size:	6475
Cytogenetics:	9q22.33
RefSeq ORF:	1509
Synonyms:	AAT5; ACVRLK4; ALK-5; ALK5; ESS1; LDS1; LDS1A; LDS2A; MSSE; SKR4; tbetaR-I; TBR-i; TBRI; TGFR-1
Summary:	The protein encoded by this gene forms a heteromeric complex with type II TGF-beta receptors when bound to TGF-beta, transducing the TGF-beta signal from the cell surface to the cytoplasm. The encoded protein is a serine/threonine protein kinase. Mutations in this gene have been associated with Loews-Dietz aortic aneurysm syndrome (LDAS). Multiple transcript variants encoding different isoforms have been found for this gene. [provided by RefSeq, Aug 2008]
Protein Families:	Druggable Genome, Protein Kinase, Transmembrane
Protein Pathways:	Adherens junction, Chronic myeloid leukemia, Colorectal cancer, Cytokine-cytokine receptor interaction, Endocytosis, MAPK signaling pathway, Pancreatic cancer, Pathways in cancer, TGF-beta signaling pathway

Product images:



Coomassie blue staining of purified TGFBRI protein (Cat# [TP319514]). The protein was produced from HEK293T cells transfected with TGFBRI cDNA clone (Cat# [RC219514]) using MegaTran 2.0 (Cat# [TT210002]).