

Product datasheet for **TP319486**

PLA1A (NM_015900) Human Recombinant Protein

Product data:

Product Type:	Recombinant Proteins
Description:	Purified recombinant protein of Homo sapiens phospholipase A1 member A (PLA1A), 20 µg
Species:	Human
Expression Host:	HEK293T
Expression cDNA Clone or AA Sequence:	>RC219486 representing NM_015900 Red =Cloning site Green =Tags(s)
	<p>MPPGPWESCFWVGGLILWLSVSGSSGDAPPTPQPKCADFQSANLFEGTDLKVQFLLFVPSNPSCGQLVEGS SDLQNSGFNATLGTKLIHGFRLVGTKPSWIDTFIRTLRATNANVIAVDWIYGSTGVYFSAVKNVIKLS LEISLFLNKLVLGVSESSIHIIGVSLGAHVGGMVGQLFGGQLGQITGLDPAGPEYTRASVEERLDAGDA LFVEAIHTDNDLGRIPVGHVDYFVNGGQDQPGCPTFFYAGYSYLICDHMRVHLYISALENSCPLMAF PCASYKAFLAGRCLDCFNPFLSCPRIGLVEQGQGVKIEPLPKEVKVYLLTSSAPYCMHHSLVEFHLKEL RNKDTNIEVTFSSNITSSSKITIPKQORYGKIIAHATPQCQINQVKFKFQSSNRVWKKDRRTTIIGKFC TALLPVNDREKMVCLPEPVNLQASVTVSCDLKIACV</p> <p>TRTRPLEQKLISEEDLAANDILDYKDDDDKV</p>
Tag:	C-Myc/DDK
Predicted MW:	49.5 kDa
Concentration:	>0.05 µg/µL as determined by microplate BCA method
Purity:	> 80% as determined by SDS-PAGE and Coomassie blue staining
Buffer:	25 mM Tris-HCl, 100 mM glycine, pH 7.3, 10% glycerol
Preparation:	Recombinant protein was captured through anti-DDK affinity column followed by conventional chromatography steps.
Note:	For testing in cell culture applications, please filter before use. Note that you may experience some loss of protein during the filtration process.
Storage:	Store at -80°C.
Stability:	Stable for 12 months from the date of receipt of the product under proper storage and handling conditions. Avoid repeated freeze-thaw cycles.
RefSeq:	<u>NP_056984</u>



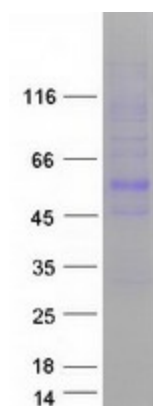
[View online »](#)

Locus ID: 51365
UniProt ID: [Q53H76](#)
RefSeq Size: 1758
Cytogenetics: 3q13.33
RefSeq ORF: 1368
Synonyms: PS-PLA1; PSPLA1

Summary: The protein encoded by this gene is a phospholipase that hydrolyzes fatty acids at the sn-1 position of phosphatidylserine and 1-acyl-2-lysophosphatidylserine. This secreted protein hydrolyzes phosphatidylserine in liposomes. Three transcript variants encoding different isoforms have been found for this gene.[provided by RefSeq, May 2011]

Protein Families: Druggable Genome, Secreted Protein

Product images:



Coomassie blue staining of purified PLA1A protein (Cat# TP319486). The protein was produced from HEK293T cells transfected with PLA1A cDNA clone (Cat# [RC219486]) using MegaTran 2.0 (Cat# [TT210002]).