

Product datasheet for **TP319476M**

TREML1 (NM_178174) Human Recombinant Protein

Product data:

Product Type:	Recombinant Proteins
Description:	Recombinant protein of human triggering receptor expressed on myeloid cells-like 1 (TREML1), 100 µg
Species:	Human
Expression Host:	HEK293T
Expression cDNA Clone or AA Sequence:	>RC219476 representing NM_178174 Red =Cloning site Green =Tags(s)

MGLTLLLLLLLLLGLGQGIVGSLPEVLQAPVGSSILVQCHYRLQDVKAQKVVCRFLPEGCQPLVSSAVDRR
APAGRRFTLTLGGGLLQVEMVTLQEEDAGEYGCMVDGARGPQILHRVSLNILPPEEEETHKIGSLAEN
AFSDPAGSANPLEPSQDEKSIPLIWGAVLLVGLLVAAVLFAVMAKRKQGNRLGVCGRFLSSRVSGMNP
SVVHHVSDSGPAAELPLDVPHIRLDSPPSFDNTTYTSLPLDSPSGKPSLPAPSSLPLPKVLVCSKPV
YATVIFPGGNKGGGTSCGPAQNPPNNQTPSS

TRTRPLEQKLISEEDLAANDILDYKDDDDKV

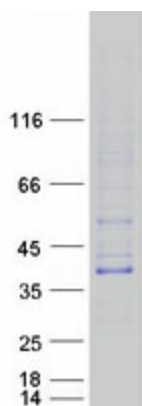
Tag:	C-Myc/DDK
Predicted MW:	32.5 kDa
Concentration:	>0.05 µg/µL as determined by microplate BCA method
Purity:	> 80% as determined by SDS-PAGE and Coomassie blue staining
Buffer:	25 mM Tris-HCl, 100 mM glycine, pH 7.3, 10% glycerol
Preparation:	Recombinant protein was captured through anti-DDK affinity column followed by conventional chromatography steps.
Note:	For testing in cell culture applications, please filter before use. Note that you may experience some loss of protein during the filtration process.
Storage:	Store at -80°C.
Stability:	Stable for 12 months from the date of receipt of the product under proper storage and handling conditions. Avoid repeated freeze-thaw cycles.
RefSeq:	NP_835468
Locus ID:	340205



[View online »](#)

UniProt ID:	Q86YW5
RefSeq Size:	980
Cytogenetics:	6p21.1
RefSeq ORF:	933
Synonyms:	dj238O23.3; GLTL1825; PRO3438; TLT-1; TLT1
Summary:	This gene encodes a member of the triggering receptor expressed on myeloid cells-like (TREM) family. The encoded protein is a type 1 single Ig domain orphan receptor localized to the alpha-granule membranes of platelets. The encoded protein is involved in platelet aggregation, inflammation, and cellular activation and has been linked to Gray platelet syndrome. Alternative splicing results in multiple transcript variants [provided by RefSeq, Nov 2012]
Protein Families:	Druggable Genome, Transmembrane

Product images:



Coomassie blue staining of purified TREML1 protein (Cat# [TP319476]). The protein was produced from HEK293T cells transfected with TREML1 cDNA clone (Cat# [RC219476]) using MegaTran 2.0 (Cat# [TT210002]).