

Product datasheet for TP319468M

SF4 (SUGP1) (NM_172231) Human Recombinant Protein

Product data:

Product Type: Recombinant Proteins

Description: Recombinant protein of human splicing factor 4 (SF4), 100 µg

Species: Human

Expression Host: HEK293T

Expression cDNA >RC219468 representing NM_172231

Clone or AA **Red**=Cloning site **Green**=Tags(s)

Sequence:

MSLKMDNRDVAGKANRWFVAPPKSGKMNMNILHQEELIAQKKREIEAKMEQKAKQNQVAVASPPHPGEI
TNAHNSSCISNKFANDGSFLQQFLKLQKAQTSTDAPTSAPSAPPSTPTPSAGKRSLISRRTGLGLASLP
GPVKSYSYHAKQLPVAHRPSVVFQSPDEDEEEDYEQWLEIKVSPPEGAETRVIEKLARFVAEGGPELEKVA
MEDYKDNPAFAFLHDKNSREFLYYRKKVAEIRKEAQKSQAASQKVSPPEDEEVKNLAEKLARFIADGGPE
VETIALQNNRENQAFSFLYEPNSQGYKYRQKLEEFKAKASSTGSFTAPDPGLKRKSPPEALSGSLPPA
TTCPASSTPAPTIIIPAPAAPGKPASAATVKKRKRKSRWGPEEDKVELPPAELVQRDVDASPSPLSVQDLKG
LGYEKGPVGLVGVTELSDAQKKQLKEQQEMQMYDMIMQHKRAMQDMQLLWEKAVQQHQHGYDSDEEVD
SELGTWEHQLRRMEMDKTREWAEQLTKMGRGKHFIGDFLPPDELEKFMETFKALKEGREPDYSEYKEFKL
TVENIGYQMLMKMGWKEGEGLGSEGQGIKNPNVNGKTTTVDGAGFGIDRPAELSKEDDEYEAFRKRMMMLAY
RFRPNPLNPRRPYY

TRTRPLEQKLISEEDLAANDILDYKDDDDKV

Tag: C-Myc/DDK

Predicted MW: 72.3 kDa

Concentration: >0.05 µg/µL as determined by microplate BCA method

Purity: > 80% as determined by SDS-PAGE and Coomassie blue staining

Buffer: 25 mM Tris-HCl, 100 mM glycine, pH 7.3, 10% glycerol

Preparation: Recombinant protein was captured through anti-DDK affinity column followed by conventional chromatography steps.

Note: For testing in cell culture applications, please filter before use. Note that you may experience some loss of protein during the filtration process.

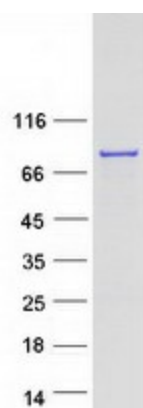
Storage: Store at -80°C.



[View online »](#)

Stability:	Stable for 12 months from the date of receipt of the product under proper storage and handling conditions. Avoid repeated freeze-thaw cycles.
RefSeq:	NP_757386
Locus ID:	57794
UniProt ID:	Q8IWZ8
RefSeq Size:	2101
Cytogenetics:	19p13.11
RefSeq ORF:	1935
Synonyms:	F23858; RBP; SF4
Summary:	SF4 is a member of the SURP family of splicing factors.[supplied by OMIM, Sep 2003]

Product images:



Coomassie blue staining of purified SUGP1 protein (Cat# [TP319468]). The protein was produced from HEK293T cells transfected with SUGP1 cDNA clone (Cat# [RC219468]) using MegaTran 2.0 (Cat# [TT210002]).