

## Product datasheet for **TP319438M**

### **RNF135 (NM\_032322) Human Recombinant Protein**

#### **Product data:**

<b>Product Type:</b>	Recombinant Proteins
<b>Description:</b>	Recombinant protein of human ring finger protein 135 (RNF135), transcript variant 1, 100 µg
<b>Species:</b>	Human
<b>Expression Host:</b>	HEK293T
<b>Expression cDNA Clone or AA Sequence:</b>	>RC219438 representing NM_032322 <b>Red</b> =Cloning site <b>Green</b> =Tags(s)  MAGLGLGSAVPVWLAEDDLGCIICQGLLDWPATLPCGHSEFCRHCLEALWGARDARRWACPTCRQGAAQQP HLRKNTLLQDLADKYRRAAREIQAGSDPAHCPCPGSSSLSSAAARPRRRPELQRVAVEKSITEVAQELTE LVEHLVDIVRSLQNQRPLSESGPDNELSILGKAFSSGVDLSMASPKLVTSDTAAGKIRDILHDLEEIQEK LQESVTWKEAPEAQMQGELLEAPSSSSCPLPDQSHPALRRASRFAQWAIHPTFNKLSLCSLEVSKDSRT VTVSHRPQPYRWSCERFSTSQVLCQALSSGKHYWEVDTRNCSHWAVGVASWEMSRDQVLGRMTDSCCVE WKGTSQLSAWHMVKETVLGSDRPGVVGIVLNL EEGKLA FYSDVNQEKLLYECTISASSPLYPAFWLYGLH PGNYLIIKQVKV  <b>TRTRPLEQKLISEEDLAANDILDYKDDDDKV</b>
<b>Tag:</b>	C-Myc/DDK
<b>Predicted MW:</b>	47.7 kDa
<b>Concentration:</b>	>0.05 µg/µL as determined by microplate BCA method
<b>Purity:</b>	> 80% as determined by SDS-PAGE and Coomassie blue staining
<b>Buffer:</b>	25 mM Tris-HCl, 100 mM glycine, pH 7.3, 10% glycerol
<b>Preparation:</b>	Recombinant protein was captured through anti-DDK affinity column followed by conventional chromatography steps.
<b>Note:</b>	For testing in cell culture applications, please filter before use. Note that you may experience some loss of protein during the filtration process.
<b>Storage:</b>	Store at -80°C.
<b>Stability:</b>	Stable for 12 months from the date of receipt of the product under proper storage and handling conditions. Avoid repeated freeze-thaw cycles.
<b>RefSeq:</b>	<u><a href="#">NP_115698</a></u>



[View online »](#)

Locus ID: 84282

UniProt ID: [Q8IUD6](#), [F5GX60](#)

RefSeq Size: 2195

Cytogenetics: 17q11.2

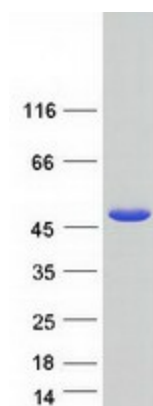
RefSeq ORF: 1296

Synonyms: L13; MMFD; REUL; Riplet

**Summary:** The protein encoded by this gene contains a RING finger domain, a motif present in a variety of functionally distinct proteins and known to be involved in protein-protein and protein-DNA interactions. This gene is located in a chromosomal region known to be frequently deleted in patients with neurofibromatosis. Alternatively spliced transcript variants encoding distinct isoforms have been reported. [provided by RefSeq, Jul 2008]

**Protein Families:** Druggable Genome

### Product images:



Coomassie blue staining of purified RNF135 protein (Cat# [TP319438]). The protein was produced from HEK293T cells transfected with RNF135 cDNA clone (Cat# [RC219438]) using MegaTran 2.0 (Cat# [TT210002]).