

## Product datasheet for **TP319432L**

### **BAGE2 (NM\_182482) Human Recombinant Protein**

#### Product data:

Product Type:	Recombinant Proteins
Description:	Recombinant protein of human B melanoma antigen family, member 2 (BAGE2), 1 mg
Species:	Human
Expression Host:	HEK293T
Expression cDNA Clone or AA Sequence:	>RC219432 representing NM_182482 <b>Red</b> =Cloning site <b>Green</b> =Tags(s)
	MAAGVVFLALSAQLLQARLMKEESPVSWRLEPEDGTALDVHVFVSTLEPLSNVAVKRNVPKCIILVLQEP TPFRISVTSSCFVQNTLTLLKDRRKMQTVQCATARETS
	<b>TR</b> TRPLE <b>QKLISEEDLA</b> ANDILDYKDDDDKV
Tag:	C-Myc/DDK
Predicted MW:	12 kDa
Concentration:	>0.05 µg/µL as determined by microplate BCA method
Purity:	> 80% as determined by SDS-PAGE and Coomassie blue staining
Buffer:	25 mM Tris-HCl, 100 mM glycine, pH 7.3, 10% glycerol
Preparation:	Recombinant protein was captured through anti-DDK affinity column followed by conventional chromatography steps.
Note:	For testing in cell culture applications, please filter before use. Note that you may experience some loss of protein during the filtration process.
Storage:	Store at -80°C.
Stability:	Stable for 12 months from the date of receipt of the product under proper storage and handling conditions. Avoid repeated freeze-thaw cycles.
RefSeq:	<a href="#">NP_872288</a>
Locus ID:	85319
RefSeq Size:	1891
Cytogenetics:	21p11.2
RefSeq ORF:	327

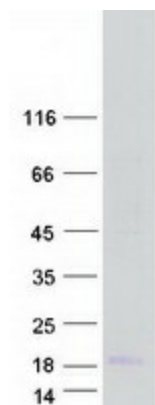


[View online »](#)

**Synonyms:** CT2.2

**Protein Families:** Druggable Genome

**Product images:**



Coomassie blue staining of purified BAGE2 protein (Cat# [TP319432]). The protein was produced from HEK293T cells transfected with BAGE2 cDNA clone (Cat# [RC219432]) using MegaTran 2.0 (Cat# [TT210002]).