

## Product datasheet for **TP319414**

### MT1E (NM\_175617) Human Recombinant Protein

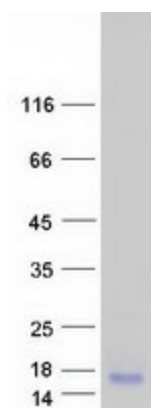
#### Product data:

Product Type:	Recombinant Proteins
Description:	Recombinant protein of human metallothionein 1E (MT1E), 20 µg
Species:	Human
Expression Host:	HEK293T
Expression cDNA Clone or AA Sequence:	>RC219414 protein sequence <b>Red</b> =Cloning site <b>Green</b> =Tags(s)
	MDPNCSCATGGGCTCAGSCKCKECKCTSCCKKSCCSCPVGCAKCAQGCVCKGASEKCSCCA
	<b>TRTRPLEQKLISEEDLAANDILDYKDDDDKV</b>
Tag:	C-Myc/DDK
Predicted MW:	5.8 kDa
Concentration:	>0.05 µg/µL as determined by microplate BCA method
Purity:	> 80% as determined by SDS-PAGE and Coomassie blue staining
Buffer:	25 mM Tris-HCl, 100 mM glycine, pH 7.3, 10% glycerol
Preparation:	Recombinant protein was captured through anti-DDK affinity column followed by conventional chromatography steps.
Note:	For testing in cell culture applications, please filter before use. Note that you may experience some loss of protein during the filtration process.
Storage:	Store at -80°C.
Stability:	Stable for 12 months from the date of receipt of the product under proper storage and handling conditions. Avoid repeated freeze-thaw cycles.
RefSeq:	<a href="#">NP_783316</a>
Locus ID:	4493
UniProt ID:	<a href="#">P04732</a>
RefSeq Size:	519
Cytogenetics:	16q13



[View online »](#)

RefSeq ORF:	183
Synonyms:	MT-1E; MT-IE; MT1; MTD
Summary:	Metallothioneins have a high content of cysteine residues that bind various heavy metals; these proteins are transcriptionally regulated by both heavy metals and glucocorticoids. [UniProtKB/Swiss-Prot Function]
Protein Families:	Druggable Genome

**Product images:**

Coomassie blue staining of purified MT1E protein (Cat# TP319414). The protein was produced from HEK293T cells transfected with MT1E cDNA clone (Cat# [RC219414]) using MegaTran 2.0 (Cat# [TT210002]).