

## Product datasheet for TP319402M

### Xanthine Oxidase (XDH) (NM\_000379) Human Recombinant Protein

#### Product data:

**Product Type:** Recombinant Proteins  
**Description:** Recombinant protein of human xanthine dehydrogenase (XDH), 100 µg  
**Species:** Human  
**Expression Host:** HEK293T  
**Expression cDNA Clone or AA Sequence:** >RC219402 representing NM\_000379  
Red=Cloning site Green=Tags(s)

MTADKLVFFVNGRKVVEKNADPETLLAYLRRKLGLSGTKLGC GEGGCGACTVMLS KYDRLQNKIVHFSA  
 NA CLAPICSLHHVAVTTVEGIGSTKTRLHPVQERIAKSHGSQCGFCTPGIVMSMYTLLRNQPEPTMEEIE  
 NAFQGNLCRCTGYRPILQGFRTFARDGGCCGGDGNPNCCMNQK KDHSVLSPLFKPEEFTPLDPTQEP  
 IFPELLRLKDTPRKQLRFEGERVTWIQASTLKELDLKAQHPDAKL VVGNT EIGIEMKFKNMLFPMIVC  
 PAWIPELNSVEHGPDGISFGAACPLSIVEKTLVD AVAKLPAQKTEVFRGVLEQLRWFAGKQVKSVASVGG  
 NIITASPISDLNPVFMASGAKLLTVSRGTRRTVQMDHTFFPGYRKTLLSPEEILLSIEIPYSREGEYFSA  
 FKQASREDDIAKVTSGMRVLFKPGTTEVQELALCYGGMANRTISALKTTQRQLSKLWKEELLQDVCAGL  
 AEELHLPDAPGGMVDFRCTLTLSFFFK FYLTVLQKLGQENLEDKCGKLDPTFASATLLFQKDPPADVQL  
 FQEV PKGQSEEDMVG RPLPHLAADMQASGEAVYCDDIPRYENELSLRLVTSTRAHAKIKSIDTSEAKKVP  
 GFVCFISADDVPGSNITGICNDET VFAKDKVTCVGHII GAVVADTPEHTQRAAQGVKITYEELPAITIE  
 DAIKNSFYGP ELKIEKGD LKKGFSEADNVSGEIIYIGGQEHFYLETHCTIAVPKGEAGEMELFVSTQNT  
 MKTQSFVAKMLGVPANRIVRVKRMGGGFGGKETRSTVSTAVALAAYKTGRPVRCMLDRDEDM LITGGR  
 HPFLARYKVGFMKTGTVALEVDHFSNVGNTQDLSQSIMERALFHMDNCYKIPNIRGTGR LCKTNLPSNT  
 AFRGFGGPQGM LIAECWMSEVAVTCGMPAEVRRKNLYKEGDLTHFNQKLEGFTLPRCWEELCLASSQYHA  
 RKSEVDKFNKENCWKKRGLCIIP TKFGISFTVPFLNQAGALLHVYTDGSVLLTHGGTEMGQGLHTKMVQV  
 ASRALKIPTS KIYISETSTNTVPNTSPTAASVSADLNGQAVYACQTILKRLEPYKKNPSG SWEDWVTA  
 AYMDTVSLSATGFYRTPNLGYSFETNSGNPFHYFSYGVACSEVEIDCLTGDHKNLRTDIVMDV GSSLNPA  
 IDIGQVEGAFVQGLGLFTLEELHYSPEGSLHTRGPSTYKIPAFGSIPIEFVSLLRDCPNKKAIYASKAV  
 GEPPLFLAASIFFAIKDAIRAARAQHTGN NVKELFRLDSPATPEKIRNACVDKFTTLCVTGVPENCKPWS  
 VRV

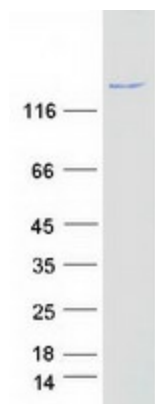
TRTRPLEQKLISEEDLAANDILDYKDDDDKV

**Tag:** C-Myc/DDK  
**Predicted MW:** 146.2 kDa



[View online »](#)

<b>Concentration:</b>	>0.05 µg/µL as determined by microplate BCA method
<b>Purity:</b>	> 80% as determined by SDS-PAGE and Coomassie blue staining
<b>Buffer:</b>	25 mM Tris-HCl, 100 mM glycine, pH 7.3, 10% glycerol
<b>Preparation:</b>	Recombinant protein was captured through anti-DDK affinity column followed by conventional chromatography steps.
<b>Note:</b>	For testing in cell culture applications, please filter before use. Note that you may experience some loss of protein during the filtration process.
<b>Storage:</b>	Store at -80°C.
<b>Stability:</b>	Stable for 12 months from the date of receipt of the product under proper storage and handling conditions. Avoid repeated freeze-thaw cycles.
<b>RefSeq:</b>	<a href="#">NP_000370</a>
<b>Locus ID:</b>	7498
<b>UniProt ID:</b>	<a href="#">P47989</a>
<b>RefSeq Size:</b>	4428
<b>Cytogenetics:</b>	2p23.1
<b>RefSeq ORF:</b>	3999
<b>Synonyms:</b>	XAN1; XO; XOR
<b>Summary:</b>	Xanthine dehydrogenase belongs to the group of molybdenum-containing hydroxylases involved in the oxidative metabolism of purines. The encoded protein has been identified as a moonlighting protein based on its ability to perform mechanistically distinct functions. Xanthine dehydrogenase can be converted to xanthine oxidase by reversible sulfhydryl oxidation or by irreversible proteolytic modification. Defects in xanthine dehydrogenase cause xanthinuria, may contribute to adult respiratory stress syndrome, and may potentiate influenza infection through an oxygen metabolite-dependent mechanism. [provided by RefSeq, Jan 2014]
<b>Protein Families:</b>	Druggable Genome
<b>Protein Pathways:</b>	Caffeine metabolism, Drug metabolism - other enzymes, Metabolic pathways, Purine metabolism

**Product images:**

Coomassie blue staining of purified XDH protein (Cat# [TP319402]). The protein was produced from HEK293T cells transfected with XDH cDNA clone (Cat# [RC219402]) using MegaTran 2.0 (Cat# [TT210002]).