

## Product datasheet for TP319402L

### Xanthine Oxidase (XDH) (NM\_000379) Human Recombinant Protein

#### Product data:

Product Type:	Recombinant Proteins
Description:	Recombinant protein of human xanthine dehydrogenase (XDH), 1 mg
Species:	Human
Expression Host:	HEK293T
Expression cDNA Clone or AA Sequence:	>RC219402 representing NM_000379 Red=Cloning site Green=Tags(s)

MTADKLVFFVNGRKVVEKNADPETLLAYLRRKLGSLGKLGCGEGGCGACTVMLSXYDRLQNKIVHFSA  
NACLAPICSLHHVAVTTVEGIGSTKTRLHPVQERIAKSHGSQCGFCTPGIVMSMYTLLRNQPEPTMEEIE  
NAFQGNLCRCTGYRPILQGFRTFARDGGCCGGDGNPNCCMNQKDHVSLSPLFKPEEFTPLDPTQEP  
IFPELLRLKDTPRKQLRFEGERVTWIQASTLKELDLKAQHPDAKLVVGNTEIGIEMKFKNMLFPMIVC  
PAWIPELNSVEHGPDGISFGAACPLSIVEKTLVDAAVAKLPAQKTEVFRGVLEQLRWFAGKQVKSVASVGG  
NIITASPISDLNPVFMASGAKLLTVSRGTRRTVQMDHTFFPGYRKTLLSPEEILLSIEIPYSREGEYFSA  
FKQASRREDDIAKVTSGMRVLFKPGTTEVQELALCYGGMANRTISALKTTQRQLSKLWKEELLQDVCAGL  
AEELHLPDAPGGMVDFRCTLTLSFFFKPYLTVLQKLGQENLEDKCGKLDPTFASATLLFQKDPADVQL  
FQEVKPGQSEEDMVGRLPHLAADMQASGEAVYCDIPRYENELSLRLVTSTRAHAKIKSIDTSEAKKVP  
GFVCFISADDVPGSNITGICNDETVAKDKVTCVGHIIAVVADTPEHTQRAAQGVKITYEELPAITIE  
DAIKNSFYGPCLKIEKGDLLKGFSEADNVSGEIIYIGGQEHFYLETHCTIAVPKGEAGEMELFVSTQNT  
MKTQSFVAKMLGVPANRIVRVKRMGGGFGGKETRSTVSTAVALAAYKTRPVRMCLDRDEMLITGGR  
HPFLARYKVGFMKTGTVALEVDHFSNVGNTQDLSQSIMERALFHMDNCYKIPNIRGTGRKCTNLPNSNT  
AFRGFGGPQGMIAECWMSEVAVTCGMPAEVRRKNLYKEGDLTHFNQKLEGFTLPRCWEELCLASSQYHA  
RKSEVDKFNKENCWKKRGLCIPTKFGISFTVPFLNQAGALLHVYTDGSVLLTHGGTEMGQGLHTKMVQV  
ASRALKIPTS KIYSETSTNTVPNTSPTAASVSADLNGQAVYACQITILKRLPEYKKNPSGSWEDWVTA  
AYMDTVSLSATGFYRTPNLGYSFETNSGNPFHYFSYGVACSEVEIDCLTGDHKNLRTDIVMDVGSLSLNP  
IDIGQVEGAFVQGLGLFTLEELHYSPEGLHTRGPSTYKIPAFGSIPIEFVSLRLDCPNKKAIYASKAV  
GEPPLFLAASIFFAIKDAIRAARAQHTGNVVKELFRLDSPATPEKIRNACVDKFTTLCVTGVPENCKPWS  
VRV

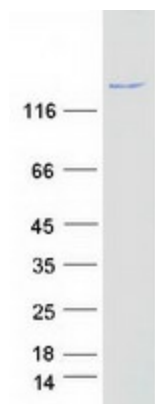
TRTRPLEQKLISEEDLAANDILDYKDDDDKV

Tag:	C-Myc/DDK
Predicted MW:	146.2 kDa



[View online »](#)

<b>Concentration:</b>	>0.05 µg/µL as determined by microplate BCA method
<b>Purity:</b>	> 80% as determined by SDS-PAGE and Coomassie blue staining
<b>Buffer:</b>	25 mM Tris-HCl, 100 mM glycine, pH 7.3, 10% glycerol
<b>Preparation:</b>	Recombinant protein was captured through anti-DDK affinity column followed by conventional chromatography steps.
<b>Note:</b>	For testing in cell culture applications, please filter before use. Note that you may experience some loss of protein during the filtration process.
<b>Storage:</b>	Store at -80°C.
<b>Stability:</b>	Stable for 12 months from the date of receipt of the product under proper storage and handling conditions. Avoid repeated freeze-thaw cycles.
<b>RefSeq:</b>	<a href="#">NP_000370</a>
<b>Locus ID:</b>	7498
<b>UniProt ID:</b>	<a href="#">P47989</a>
<b>RefSeq Size:</b>	4428
<b>Cytogenetics:</b>	2p23.1
<b>RefSeq ORF:</b>	3999
<b>Synonyms:</b>	XAN1; XO; XOR
<b>Summary:</b>	Xanthine dehydrogenase belongs to the group of molybdenum-containing hydroxylases involved in the oxidative metabolism of purines. The encoded protein has been identified as a moonlighting protein based on its ability to perform mechanistically distinct functions. Xanthine dehydrogenase can be converted to xanthine oxidase by reversible sulfhydryl oxidation or by irreversible proteolytic modification. Defects in xanthine dehydrogenase cause xanthinuria, may contribute to adult respiratory stress syndrome, and may potentiate influenza infection through an oxygen metabolite-dependent mechanism. [provided by RefSeq, Jan 2014]
<b>Protein Families:</b>	Druggable Genome
<b>Protein Pathways:</b>	Caffeine metabolism, Drug metabolism - other enzymes, Metabolic pathways, Purine metabolism

**Product images:**

Coomassie blue staining of purified XDH protein (Cat# [TP319402]). The protein was produced from HEK293T cells transfected with XDH cDNA clone (Cat# [RC219402]) using MegaTran 2.0 (Cat# [TT210002]).