

Product datasheet for TP319402

Xanthine Oxidase (XDH) (NM_000379) Human Recombinant Protein

Product data:

Product Type:	Recombinant Proteins
Description:	Recombinant protein of human xanthine dehydrogenase (XDH), 20 µg
Species:	Human
Expression Host:	HEK293T
Expression cDNA Clone or AA Sequence:	>RC219402 representing NM_000379 Red =Cloning site Green =Tags(s)

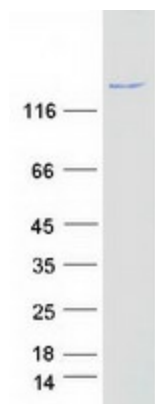
MTADKLVFFVNGRKVVEKNADPETLLLAYLRRKLGSLGKLGCGEGGCGACTVMLS KYDRLQNKIVHFSANACLAPICSLHHVAVTTVEGIGSTKRLHPVQERIAKSHGSQCGFCTPGIVMSMYTLRNQPEPTMEEIE NAFQGNLCRCTGYRPILQGFRTFARDGGCCGGDGNPNCCMNQKKDHSVLSLPSLFPKEEFTPLDPTQEP
IFPELLRLKDTPRKQLRFEGERV TWIQASTLKELLDLKAQHPDAKL VVGNT EIGIEMKFKNMLFPMIVC PAWIPELNSVEHGPDGISFGAACPLSIVEKTLVDAVAKLPAQKTEVFRGVLEQLRWFAGKQVKSVASVGG NIITASPIDLNPVFMASGAKLLVSRGTRRTVQMDHTFFPGYRKTLLSPEEILLSIEIPYSREGEYFSA FKQASRREDDIAKVTSGMRVLFKPGTTEVQELALCYGGMANRTISALKTTQRQLSKLWKEELLQDVCAGL AEELHLPDAPGGMVDFRCTLTSFFFKFYLTVLQKLGQENLEDKCGKLDPTFASATLLFQKDPADVQL FQEVPGQSEEDMVGRPLPHLAADMQASGEAVY CDDIPRYENELSLRLVSTRAHAKIKSIDTSEAKKVP GFVCFISADDVPGSNITGICNDETVFAKDKVTCVGHII GAVVADTPEHTQRAAQGVKITYEELPAITIE DAIKNN SFYGP ELKIEKGD LKKG FSEADNVVSGE IYIGGQE H FYLETHCTIAVPKGEAGEMELFVSTQNT MKTQSFVAKMLGVPANRIVRVKRMGGGFGGKETRSTVVSTAVALAAYKTGRPVR CMLDRDEDMLITGGR
HPFLARYKVGFMKTGTVALEVDHFSNVGNTQDLSQSIMERALFHMDN CYKIPNIRGTGRLCKTNLPSNT AFRGFGGPQGM LIAECWMSEVAVTCGMPAEVRRKNLYKEGDLTHFNQKLEGFTLPRCWEECLASSQYHA
RKSEVDKFNKENCWKKRGLCIPTKFGISFTVPFLNQAGALLHVYTDGSVLLTHGGTEMGQGLHTKMVQV ASRALKIPTS KIYISETSTNTVPNTSPTAASVSADLNGQAVYAACQTILKRLEPYKKKNPSGSWEDWVTA AYMDTVSLSATGFYRTPNLGYSFETNSGNPFHYFSYGVACSEVEIDCLTGDHKNLRTDIVMDV GSSLNPA IDIGQVEGAFVQGLGLFTLEELHYSPEGLHTRGPSTYKIPAFGSIPIEFRVSLLRDCPNKKAIYASKAV GEPPLFLAASIFFAIKDAIRAARAQHTGNNVKELFRLDSPATPEKIRNACVDKFTTLCVTGVPENCKPWS VRV

TRTRPLEQKLISEEDLAANDILDYKDDDDKV



[View online >](#)

Tag:	C-Myc/DDK
Predicted MW:	146.2 kDa
Concentration:	>0.05 µg/µL as determined by microplate BCA method
Purity:	> 80% as determined by SDS-PAGE and Coomassie blue staining
Buffer:	25 mM Tris-HCl, 100 mM glycine, pH 7.3, 10% glycerol
Preparation:	Recombinant protein was captured through anti-DDK affinity column followed by conventional chromatography steps.
Note:	For testing in cell culture applications, please filter before use. Note that you may experience some loss of protein during the filtration process.
Storage:	Store at -80°C.
Stability:	Stable for 12 months from the date of receipt of the product under proper storage and handling conditions. Avoid repeated freeze-thaw cycles.
RefSeq:	NP_000370
Locus ID:	7498
UniProt ID:	P47989
RefSeq Size:	4428
Cytogenetics:	2p23.1
RefSeq ORF:	3999
Synonyms:	XAN1; XO; XOR
Summary:	Xanthine dehydrogenase belongs to the group of molybdenum-containing hydroxylases involved in the oxidative metabolism of purines. The encoded protein has been identified as a moonlighting protein based on its ability to perform mechanistically distinct functions. Xanthine dehydrogenase can be converted to xanthine oxidase by reversible sulfhydryl oxidation or by irreversible proteolytic modification. Defects in xanthine dehydrogenase cause xanthinuria, may contribute to adult respiratory stress syndrome, and may potentiate influenza infection through an oxygen metabolite-dependent mechanism. [provided by RefSeq, Jan 2014]
Protein Families:	Druggable Genome
Protein Pathways:	Caffeine metabolism, Drug metabolism - other enzymes, Metabolic pathways, Purine metabolism

Product images:

Coomassie blue staining of purified XDH protein (Cat# TP319402). The protein was produced from HEK293T cells transfected with XDH cDNA clone (Cat# [RC219402]) using MegaTran 2.0 (Cat# [TT210002]).