

Product datasheet for TP319388L

Laeverin (LVRN) (NM_173800) Human Recombinant Protein

Product data:

Product Type:	Recombinant Proteins
Description:	Recombinant protein of human laeverin (LVRN), 1 mg
Species:	Human
Expression Host:	HEK293T
Expression cDNA Clone or AA Sequence:	>RC219388 representing NM_173800 Red=Cloning site Green=Tags(s)

MGPPSSSGFYVSRVALLLAGLVAAALLLALAVLAALYGHCEVPPSELPGLRDSEAESSPPLRQKPTPTP
 KPSSARELAVTTTPSNWRPPGPWDQLRLPPWLVLPHYDLELWPQLRPDELPAAGSLPFTGRVNITVRCTVA
 TSRLLLHSLFQDCERAQVGRPLSPGTGNATVGRVPVDDVWFALDTEYMVLELSEPLKPGSSYELQLSFSG
 LVKEDLREGLFLNVYTDQGERRALLASQLEPTFARYVFPFDEPALKATFNITMIHHPYSVALSNMPKLG
 QSEKEDVNGSKWTVTTFSTTPHMPTYLVAFVICDYDHVNRTERGKEIRIWARDKAIANGSADFALNITGP
 IFSFLEDLFNISYSLPKTDIIALPSFDNHAMENWGLMIFDESGLLLEPKDQLTEKKTLSYVVSHEIGHQ
 WFGNLVTMNNWNNIWLNEGFAFYFEFEVINYFNPKLPRNEIFFSNILHNILREDHALVTRAVAMKVENFK
 TSEIQELFDIFTYSKGASMARMLSCFLNEHLFVSALKSYLKTFSYSNAEQDDLWRHFQMAIDDQSTVILP
 ATKINIMDSWTHQSGFPVITLNVSTGVMKQEPFYLENIKNRTLLTSNDTWIVPILWIKNGTTQPLVWLDQ
 SSKVFPPEMQVSDSDHDWVILNLMNTGYRNVYDKLWKKLNQQLKDPKAIPIVHRLQLIDDAFSLSKNN
 YIEIETALELTKYLAEEDEIIVWHTVLVNLVTRDLVSEVNIYDIYSLKRYLLKRLNLIWNIYSTIIREN
 VLALQDDYLALISLEKLFVTACWLGLEDCLQLSKELFAKWVDHPENEIPYPIKDVVLCYGIAGLSDKEWD
 ILLNTYTNTTNKEEKIQLAYAMSCSKDPWILNRYMEYAISTSPFTSNETNIIEVVASSEVGRYVAKDFLV
 NNWQAVSKRYGTQSLINLIYTIGRTVTTDLQIVELQQFFSNMLEEHQRIRVHANLQTIKNENLNKKNLSA
 RIAAWLRRNT

TRTRPLEQKLISEEDLAANDILDYKDDDDKV

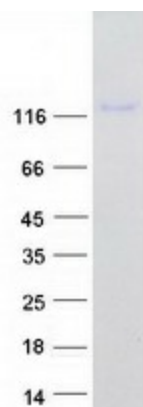
Tag:	C-Myc/DDK
Predicted MW:	113.1 kDa
Concentration:	>0.05 µg/µL as determined by microplate BCA method
Purity:	> 80% as determined by SDS-PAGE and Coomassie blue staining
Buffer:	25 mM Tris-HCl, 100 mM glycine, pH 7.3, 10% glycerol



[View online »](#)

Preparation:	Recombinant protein was captured through anti-DDK affinity column followed by conventional chromatography steps.
Note:	For testing in cell culture applications, please filter before use. Note that you may experience some loss of protein during the filtration process.
Storage:	Store at -80°C.
Stability:	Stable for 12 months from the date of receipt of the product under proper storage and handling conditions. Avoid repeated freeze-thaw cycles.
RefSeq:	<u>NP_776161</u>
Locus ID:	206338
UniProt ID:	<u>Q6Q4G3, Q0P5U8</u>
RefSeq Size:	4502
Cytogenetics:	5q23.1
RefSeq ORF:	2970
Synonyms:	APQ; AQPEP; TAQPEP
Summary:	Metalloprotease which may be important for placentation by regulating biological activity of key peptides at the embryo-maternal interface. On synthetic substrates it shows a marked preference for Leu-4-methylcoumaryl-7-amide (Leu-MCA) over Met-MCA, Arg-LCA and Lys-LCA. Cleaves the N-terminal amino acid of several peptides such as angiotensin-3, kisspeptin-10 and endokinin C.[UniProtKB/Swiss-Prot Function]
Protein Families:	Protease, Transmembrane

Product images:



Coomassie blue staining of purified LVRN protein (Cat# [TP319388]). The protein was produced from HEK293T cells transfected with LVRN cDNA clone (Cat# [RC219388]) using MegaTran 2.0 (Cat# [TT210002]).