

Product datasheet for **TP319386M**

TIA1 (NM_022173) Human Recombinant Protein

Product data:

Product Type: Recombinant Proteins

Description: Recombinant protein of human TIA1 cytotoxic granule-associated RNA binding protein (TIA1), transcript variant 2, 100 µg

Species: Human

Expression Host: HEK293T

Expression cDNA Clone or AA Sequence: >RC219386 representing NM_022173

Red=Cloning site Green=Tags(s)

MEDEMPKTLVYVGNLSRDVTEALILQLFSQIGPCKNCKMIMDTAGNDPYCFVEFHEHRHAAAAALAAMNGRK
IMGKEVKVNWATTSSQKKDTSSTVVSTQRSQDHFHVFVGDLSPEITTEDIKAAPFGRISDARVVKD
MATGKSKGYGFVSFFNKWDAENAIQQMGGQWLGGRRQIRTNWATRKPAPKSTYESNTKQLSYDEVNQSS
PSNCTVYCGGVTSGLTEQLMRQTFSPFGQIMEIRVFPDKGYSFVRFNSHESAAHAIVSVNGTTIEGHVVK
CYWGKETLDMINPVQQNQIGYPQPYGQWGWYGNAAQQIGQYMPNGWQVPAYGMYGQAWNQQGFNQTSQSS
APWMGPNYGVQPPQGQNGSMLPNQPSGYRVAGYETQ

TRTRPLEQKLISEEDLAANDILDYKDDDDKV

Tag: C-Myc/DDK

Predicted MW: 42.8 kDa

Concentration: >0.05 µg/µL as determined by microplate BCA method

Purity: > 80% as determined by SDS-PAGE and Coomassie blue staining

Buffer: 25 mM Tris-HCl, 100 mM glycine, pH 7.3, 10% glycerol

Preparation: Recombinant protein was captured through anti-DDK affinity column followed by conventional chromatography steps.

Note: For testing in cell culture applications, please filter before use. Note that you may experience some loss of protein during the filtration process.

Storage: Store at -80°C.

Stability: Stable for 12 months from the date of receipt of the product under proper storage and handling conditions. Avoid repeated freeze-thaw cycles.



[View online »](#)

RefSeq: [NP_071505](#)

Locus ID: 7072

UniProt ID: [P31483](#)

RefSeq Size: 2390

Cytogenetics: 2p13.3

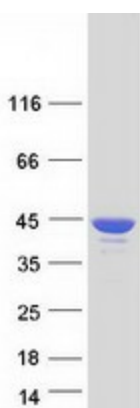
RefSeq ORF: 1158

Synonyms: ALS26; TIA-1; WDM

Summary: The product encoded by this gene is a member of a RNA-binding protein family and possesses nucleolytic activity against cytotoxic lymphocyte (CTL) target cells. It has been suggested that this protein may be involved in the induction of apoptosis as it preferentially recognizes poly(A) homopolymers and induces DNA fragmentation in CTL targets. The major granule-associated species is a 15-kDa protein that is thought to be derived from the carboxyl terminus of the 40-kDa product by proteolytic processing. Alternative splicing resulting in different isoforms has been found for this gene. [provided by RefSeq, May 2017]

Protein Families: Druggable Genome

Product images:



Coomassie blue staining of purified TIA1 protein (Cat# [TP319386]). The protein was produced from HEK293T cells transfected with TIA1 cDNA clone (Cat# [RC219386]) using MegaTran 2.0 (Cat# [TT210002]).