

Product datasheet for **TP319386L**

TIA1 (NM_022173) Human Recombinant Protein

Product data:

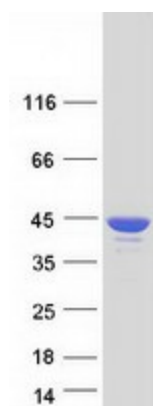
Product Type:	Recombinant Proteins
Description:	Recombinant protein of human TIA1 cytotoxic granule-associated RNA binding protein (TIA1), transcript variant 2, 1 mg
Species:	Human
Expression Host:	HEK293T
Expression cDNA Clone or AA Sequence:	>RC219386 representing NM_022173 Red =Cloning site Green =Tags(s)
	<p>MEDEMPKTLVGNLSRDVTEALILQLFSQIGPCKNCKMIMDTAGNDPYCFVEFHEHRHAAAALAAMNGR K IMGKEVKVNWATTPSSQKKDTSSTVWSTQRSQDHFHVFVGDLSPEITTEDIKAAFAPFGRISDARVVKD MATGKSKGYGFVFFNKWDAENAIQQMGGQWLGGRRQIRTNWATRKPAPKSTYESNTKQLSYDEVNQ SS PSNCTVYCGGVTSGLTEQLMRQTFSPFGQIMEIRVFPDKGYSFVRFNSHESAAHAIVSVNGTTIEGHVVK CYWGKETLDMINPVQQNQIQIGYPQPYGQWGQWYGNAQQIGQYMPNGWQVPAYGMYGQAWNQQG FNQTQSS APWMGPNYGVQPPQGQNGSMLPNQPSGYRVAGYETQ</p> <p>TRTRPLEQKLISEEDLAANDILDYKDDDDKV</p>
Tag:	C-Myc/DDK
Predicted MW:	42.8 kDa
Concentration:	>0.05 µg/µL as determined by microplate BCA method
Purity:	> 80% as determined by SDS-PAGE and Coomassie blue staining
Buffer:	25 mM Tris-HCl, 100 mM glycine, pH 7.3, 10% glycerol
Preparation:	Recombinant protein was captured through anti-DDK affinity column followed by conventional chromatography steps.
Note:	For testing in cell culture applications, please filter before use. Note that you may experience some loss of protein during the filtration process.
Storage:	Store at -80°C.



[View online »](#)

Stability:	Stable for 12 months from the date of receipt of the product under proper storage and handling conditions. Avoid repeated freeze-thaw cycles.
RefSeq:	NP_071505
Locus ID:	7072
UniProt ID:	P31483
RefSeq Size:	2390
Cytogenetics:	2p13.3
RefSeq ORF:	1158
Synonyms:	ALS26; TIA-1; WDM
Summary:	The product encoded by this gene is a member of a RNA-binding protein family and possesses nucleolytic activity against cytotoxic lymphocyte (CTL) target cells. It has been suggested that this protein may be involved in the induction of apoptosis as it preferentially recognizes poly(A) homopolymers and induces DNA fragmentation in CTL targets. The major granule-associated species is a 15-kDa protein that is thought to be derived from the carboxyl terminus of the 40-kDa product by proteolytic processing. Alternative splicing resulting in different isoforms has been found for this gene. [provided by RefSeq, May 2017]
Protein Families:	Druggable Genome

Product images:



Coomassie blue staining of purified TIA1 protein (Cat# [TP319386]). The protein was produced from HEK293T cells transfected with TIA1 cDNA clone (Cat# [RC219386]) using MegaTran 2.0 (Cat# [TT210002]).