

Product datasheet for **TP319370L**

MAP3K19 (NM_001018046) Human Recombinant Protein

Product data:

Product Type:	Recombinant Proteins
Description:	Recombinant protein of human YSK4 Sps1/Ste20-related kinase homolog (<i>S. cerevisiae</i>) (YSK4), transcript variant 2, 1 mg
Species:	Human
Expression Host:	HEK293T
Expression cDNA Clone or AA Sequence:	>RC219370 representing NM_001018046 Red =Cloning site Green =Tags(s)

MSSMPKPERHAESLLDICHDTNSSPTDLMTVTKNQNIILQSISSRSEEFDQDGDGCSHSTLVNEEEDPSGGR
QDWQPRTEGVEITVTFPRDVSPPQEMSQEDLKEKNLINSSLQEWAQAHAVSHPNEIETVELRKKKLTMRP
LVLQKEESSRELCNVNLGFLPRSCLELNISKSVTREDAPHFLKEQQRKSEEFSTSHMKYSGRSIKRHSS
GLRIYDREEKFLISNEKIFSENSLKSEEPILWTKGEILGKGAYGTVYCGLTSQGQLIAVKQVALDTSNK
LAAEKEYRKLQEEVDLLKALKHVNIVAYLGTCLQENTVSIFMEFVPGGSISSIIINRFGPLPEMVFCKYTK
QILQGVAYLHENCVHRDIKGNVMLMPTGIIKLIDFGCARRLAWAGLNGTHSDMLKSMHGTPYWMapev
INESGYGRKSDIWSIGCTVFEMATGKPPLASMDRMAAMFYGAHRGLMPPLPDHFSENAADFVRMCLTRD
QHERPSALQLLKHSFLERSH

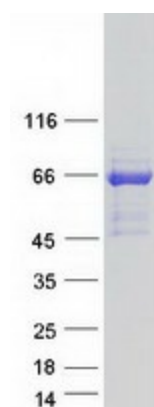
TRTRPLEQKLISEEDLAANDILDYKDDDDKV

Tag:	C-Myc/DDK
Predicted MW:	57.5 kDa
Concentration:	>0.05 µg/µL as determined by microplate BCA method
Purity:	> 80% as determined by SDS-PAGE and Coomassie blue staining
Buffer:	25 mM Tris-HCl, 100 mM glycine, pH 7.3, 10% glycerol
Preparation:	Recombinant protein was captured through anti-DDK affinity column followed by conventional chromatography steps.
Note:	For testing in cell culture applications, please filter before use. Note that you may experience some loss of protein during the filtration process.
Storage:	Store at -80°C.



[View online >](#)

Stability:	Stable for 12 months from the date of receipt of the product under proper storage and handling conditions. Avoid repeated freeze-thaw cycles.
RefSeq:	NP_001018056
Locus ID:	80122
UniProt ID:	Q56UN5
RefSeq Size:	1711
Cytogenetics:	2q21.3
RefSeq ORF:	1530
Synonyms:	RCK; YSK4
Protein Families:	Druggable Genome, Protein Kinase

Product images:

Coomassie blue staining of purified MAP3K19 protein (Cat# [TP319370]). The protein was produced from HEK293T cells transfected with MAP3K19 cDNA clone (Cat# [RC219370]) using MegaTran 2.0 (Cat# [TT210002]).