

Product datasheet for TP319359M

CD39 (ENTPD1) (NM_001776) Human Recombinant Protein

Product data:

Product Type:	Recombinant Proteins
Description:	Purified recombinant protein of Homo sapiens ectonucleoside triphosphate diphosphohydrolase 1 (ENTPD1), transcript variant 1, 100 µg
Species:	Human
Expression Host:	HEK293T
Expression cDNA Clone or AA Sequence:	>RC219359 protein sequence Red =Cloning site Green =Tags(s)

MEDTKESNVKTFCSKNILAILGFSSIIAVIALLAVGLTQNKALPENVKYGIVLDAGSSHTSLYIYKWPAE
KENDTGVVHQVEECRVKGPGISKFVQKVNEIGIYLTDCMERAREVIPRSQHQETPVYLGATAGMRLLRME
SEELADRVLDVVERSLSNYPDFDQGARIITGQEEGAYGWITINYLLGKFSQKTRWFSIVPYETNNQETFG
ALDLGGASTQVTFVPQNQTIESPDNALQFRLYGKDYNVYTHSFLCYGKDQALWQKLAKDIQVASNEILRD
PCFHPPGYKKVVNVSDLYKTPCTKRFEMTLPFQQFEIQGIGNYQQCHQSILELFNTSYCPYSQCAFNGIFL
PPLQGDGFAFSAFYFVMKFLNLTSEKVSQEKVTEMMKKFCAQPWEEIKTSYAGVKEKYLSEYCFSGTYIL
SLLLQGYHFTADSWEHIFIGKIQGS DAGWTLGYMLNLTNMIPAEQPLSTPLSHSTYVFLMVLFSVLVFT
VAIIGLLIFHKPSYFWKDMV

TRTRPLEQKLISEEDLAANDILDYKDDDDKV

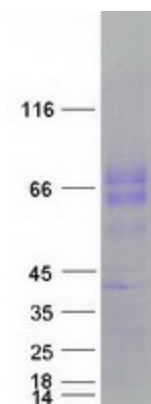
Tag:	C-Myc/DDK
Predicted MW:	57.8 kDa
Concentration:	>0.05 µg/µL as determined by microplate BCA method
Purity:	> 80% as determined by SDS-PAGE and Coomassie blue staining
Buffer:	25 mM Tris-HCl, 100 mM glycine, pH 7.3, 10% glycerol
Preparation:	Recombinant protein was captured through anti-DDK affinity column followed by conventional chromatography steps.
Note:	For testing in cell culture applications, please filter before use. Note that you may experience some loss of protein during the filtration process.
Storage:	Store at -80°C.



[View online »](#)

Stability:	Stable for 12 months from the date of receipt of the product under proper storage and handling conditions. Avoid repeated freeze-thaw cycles.
RefSeq:	NP_001767
Locus ID:	953
UniProt ID:	P49961
RefSeq Size:	12493
Cytogenetics:	10q24.1
RefSeq ORF:	1530
Synonyms:	ATPDase; CD39; NTPDase-1; SPG64
Summary:	The protein encoded by this gene is a plasma membrane protein that hydrolyzes extracellular ATP and ADP to AMP. Inhibition of this protein's activity may confer anticancer benefits. Several transcript variants encoding different isoforms have been found for this gene. [provided by RefSeq, Aug 2015]
Protein Families:	Transmembrane
Protein Pathways:	Purine metabolism, Pyrimidine metabolism

Product images:



Coomassie blue staining of purified ENTPD1 protein (Cat# [TP319359]). The protein was produced from HEK293T cells transfected with ENTPD1 cDNA clone (Cat# [RC219359]) using MegaTran 2.0 (Cat# [TT210002]).