

## Product datasheet for **TP319328**

### IL36 alpha (IL36A) (NM\_014440) Human Recombinant Protein

#### Product data:

Product Type:	Recombinant Proteins
Description:	Recombinant protein of human interleukin 1 family, member 6 (epsilon) (IL1F6), 20 µg
Species:	Human
Expression Host:	HEK293T
Expression cDNA Clone or AA Sequence:	>Peptide sequence encoded by RC219328 Blue=ORF Red=Cloning site Green=Tag(s)  MEKALKIDTPQRGSIQDINHRVWVLQDQTLIAVPRKDRMSPVTIALISCRHVETLEKDRGNPIYLGLNG LNLCLMCAKVGDQPTLQLKEKDIMDLYNQPEPVKSFYHSQSGRNSTFESVAFPGWFIASSEGCP ILTQELGKANTTDFGLTMLF TRTRPLEQKLISEEDLAANDILDYKDDDDKV  Recombinant protein using RC219328 also available, <a href="#">TP319328M</a>
Tag:	C-Myc/DDK
Predicted MW:	17.5 kDa
Concentration:	>0.05 µg/µL as determined by microplate BCA method
Purity:	> 80% as determined by SDS-PAGE and Coomassie blue staining
Buffer:	25 mM Tris-HCl, 100 mM glycine, pH 7.3, 10% glycerol
Preparation:	Recombinant protein was captured through anti-DDK affinity column followed by conventional chromatography steps.
Note:	For testing in cell culture applications, please filter before use. Note that you may experience some loss of protein during the filtration process.
Storage:	Store at -80°C.
Stability:	Stable for 12 months from the date of receipt of the product under proper storage and handling conditions. Avoid repeated freeze-thaw cycles.
RefSeq:	<a href="#">NP_055255</a>
Locus ID:	27179
UniProt ID:	<a href="#">Q9UHA7</a>



[View online »](#)

RefSeq Size: 477

Cytogenetics: 2q14.1

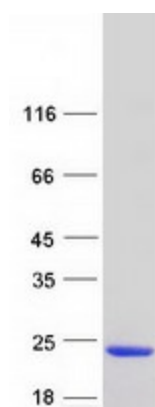
RefSeq ORF: 474

Synonyms: FIL1; FIL1(EPSILON); FIL1E; IL-1F6; IL1(EPSILON); IL1F6

**Summary:** The protein encoded by this gene is a cytokine that can activate NF-kappa-B and MAPK signaling pathways to generate an inflammatory response. The encoded protein functions primarily in skin and demonstrates increased expression in psoriasis. In addition, decreased expression of this gene has been linked to a poor prognosis in both hepatocellular carcinoma and colorectal cancer patients. [provided by RefSeq, Nov 2015]

**Protein Families:** Druggable Genome, Secreted Protein

### Product images:



Coomassie blue staining of purified IL36A protein (Cat# TP319328). The protein was produced from HEK293T cells transfected with IL36A cDNA clone (Cat# [RC219328]) using MegaTran 2.0 (Cat# [TT210002]).