

Product datasheet for TP319271M

TOM1L2 (NM_001082968) Human Recombinant Protein

Product data:

| | |
|---------------------------------------|---|
| Product Type: | Recombinant Proteins |
| Description: | Recombinant protein of human target of myb1-like 2 (chicken) (TOM1L2), transcript variant 3, 100 µg |
| Species: | Human |
| Expression Host: | HEK293T |
| Expression cDNA Clone or AA Sequence: | >RC219271 representing NM_001082968 Red=Cloning site Green=Tags(s) |

MEFLLGNPFSTPVGQCLEKATDGSLSQSEDWTLNMEICDIINETEEGPKDAIRALKKRLNGNRNYREVMLA
LTVLETCVKNCGRHFRHILVANRDFIDSVLVKII SPKNNPPTIVQDKVLALIQA WADAFRSPDLTG VVHI
YEELKRKGVEFPMADLDALSPIHTPQRSVPEVDPAATMPRSQSQQRTSAGSYSSPPPAPYSAPQAPALS
TGPITANSEQIARLRSELDVVRGNTKVMSEMLTEMVPGQEDSSDLELLQELNRTC RAMQQRIVELISRVS
NEEVTEELLHVNDLNNVFLRYERFERYRSGRSVQNASNGVLNEVTEDNLIDLGP GSPAVVSPMVGNTAP
PSSLSSQLAGLDLGTESVSGTLSSLQCCNPRDGFDMFAQTRGNSLAEQRKTVTYEDPQAVGGLASALDNR
KQSSGIPVAQPSVMDDIEVWLRTDLKGGDLEEGVTSEEFDFLEERAKAAEMVPDLPSPMEAPAPASN
PSGRKKPERSEDALFAL

TRTRPLEQKLISEEDLAANDILDYKDDDDKV

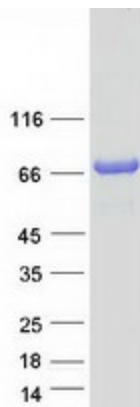
| | |
|----------------|--|
| Tag: | C-Myc/DDK |
| Predicted MW: | 55.4 kDa |
| Concentration: | >0.05 µg/µL as determined by microplate BCA method |
| Purity: | > 80% as determined by SDS-PAGE and Coomassie blue staining |
| Buffer: | 25 mM Tris-HCl, 100 mM glycine, pH 7.3, 10% glycerol |
| Preparation: | Recombinant protein was captured through anti-DDK affinity column followed by conventional chromatography steps. |
| Note: | For testing in cell culture applications, please filter before use. Note that you may experience some loss of protein during the filtration process. |
| Storage: | Store at -80°C. |



[View online »](#)

| | |
|----------------------|---|
| Stability: | Stable for 12 months from the date of receipt of the product under proper storage and handling conditions. Avoid repeated freeze-thaw cycles. |
| RefSeq: | NP_001076437 |
| Locus ID: | 146691 |
| UniProt ID: | Q6ZVM7 |
| RefSeq Size: | 5825 |
| Cytogenetics: | 17p11.2 |
| RefSeq ORF: | 1521 |
| Summary: | This gene belongs to a small gene family whose members have an N-terminal VHS domain followed by a GAT domain; domains which typically participate in vesicular trafficking. The canonical protein encoded by this gene also has a C-terminal clathrin binding motif. This protein has been shown to interact with Tollip, clathrin and ubiquitin and is thought to play a role in endosomal sorting. This gene resides in the 3.7 Mb deletion of chromosome region 17p11.2 that is associated with Smith-Magenis syndrome. Alternative splicing results in multiple transcript variants encoding distinct proteins. [provided by RefSeq, Apr 2017] |

Product images:



Coomassie blue staining of purified TOM1L2 protein (Cat# [TP319271]). The protein was produced from HEK293T cells transfected with TOM1L2 cDNA clone (Cat# [RC219271]) using MegaTran 2.0 (Cat# [TT210002]).