

## Product datasheet for TP319271

### TOM1L2 (NM\_001082968) Human Recombinant Protein

#### Product data:

Product Type:	Recombinant Proteins
Description:	Recombinant protein of human target of myb1-like 2 (chicken) (TOM1L2), transcript variant 3, 20 µg
Species:	Human
Expression Host:	HEK293T
Expression cDNA Clone or AA Sequence:	>RC219271 representing NM_001082968 Red=Cloning site Green=Tags(s)

MEFLLGNPFSTPVGQCLEKATDGSLQSEDWTLNMEICDIINETEEGPKDAIRALKKRLNGNRNYREVMLA  
LTVLETCVKNCGRHFHILVANRDFIDSVLVKII SPKNNPPTIVQDKVLALIQA WADAFRSPDLTG VVHI  
YEELKRKGVEFPMADLDALSPIHTPQRSVPEVDPAATMPRSQSQQRTSAGSYSSPPPAPYSAPQAPALS  
TGPITANSEQIARLRSELDVVRGNTKVMSEMLTEMVPGQEDSSDLELLQELNRTC RAMQQRIVELISRV  
NEEVTEELLHVNDLNNVFLRYERFERYRSGRSVQNASNGVLNEVTEDNLIDLGP GSPAVVSPMVGNTAP  
PSSLSSQLAGLDLGTESVSGTLSSLQCCNPRDGFDMFAQTRGNSLAEQRKTVTYEDPQAVGGLASALDNR  
KQSSGIPVAQPSVMDDIEVWLRTDLKGGDLEEGVTSEEFDFLEERAKAAEMVPDLPSPMEAPAPASN  
PSGRKKPERSEDALFAL

TRTRPLEQKLISEEDLAANDILDYKDDDDKV

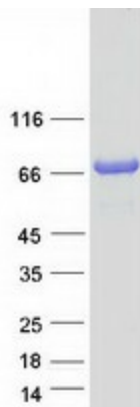
Tag:	C-Myc/DDK
Predicted MW:	55.4 kDa
Concentration:	>0.05 µg/µL as determined by microplate BCA method
Purity:	> 80% as determined by SDS-PAGE and Coomassie blue staining
Buffer:	25 mM Tris-HCl, 100 mM glycine, pH 7.3, 10% glycerol
Preparation:	Recombinant protein was captured through anti-DDK affinity column followed by conventional chromatography steps.
Note:	For testing in cell culture applications, please filter before use. Note that you may experience some loss of protein during the filtration process.
Storage:	Store at -80°C.



[View online »](#)

<b>Stability:</b>	Stable for 12 months from the date of receipt of the product under proper storage and handling conditions. Avoid repeated freeze-thaw cycles.
<b>RefSeq:</b>	<a href="#">NP_001076437</a>
<b>Locus ID:</b>	146691
<b>UniProt ID:</b>	<a href="#">Q6ZVM7</a>
<b>RefSeq Size:</b>	5825
<b>Cytogenetics:</b>	17p11.2
<b>RefSeq ORF:</b>	1521
<b>Summary:</b>	This gene belongs to a small gene family whose members have an N-terminal VHS domain followed by a GAT domain; domains which typically participate in vesicular trafficking. The canonical protein encoded by this gene also has a C-terminal clathrin binding motif. This protein has been shown to interact with Tollip, clathrin and ubiquitin and is thought to play a role in endosomal sorting. This gene resides in the 3.7 Mb deletion of chromosome region 17p11.2 that is associated with Smith-Magenis syndrome. Alternative splicing results in multiple transcript variants encoding distinct proteins. [provided by RefSeq, Apr 2017]

### Product images:



Coomassie blue staining of purified TOM1L2 protein (Cat# TP319271). The protein was produced from HEK293T cells transfected with TOM1L2 cDNA clone (Cat# [RC219271]) using MegaTran 2.0 (Cat# [TT210002]).