

Product datasheet for TP319231L

Thyrotropin Releasing Hormone (TRH) (NM_007117) Human Recombinant Protein

Product data:

Product Type: Recombinant Proteins

Description: Recombinant protein of human thyrotropin-releasing hormone (TRH), 1 mg

Species: Human

Expression Host: HEK293T

Expression cDNA Clone or AA Sequence: >RC219231 protein sequence
Red=Cloning site Green=Tags(s)

MPGPWLLLALALTLNLTGVPGGRAQPEAAQAEAVTAAEHPGLDDFLRQVERLLFLRENIQRLQGDQGEHS
ASQIFQSDWLSKRQHPGKREEEEEEGVEEEEEEGGAVGPHKRQHPGRREDEASWSVDVTQHKRQHPGRR
SPWLAYAVPKRQHPGRRADPKAQRSWEEEEEEREEDLMPEKRQHPGKRALGGPCGPQGAYGQAGLLL
GLLDDLSRSQGAEKQHPGRRAAWVREPLEE

TRTRPLEQKLISEEDLAANDILDYKDDDDKV

Tag: C-Myc/DDK

Predicted MW: 27.2 kDa

Concentration: >0.05 µg/µL as determined by microplate BCA method

Purity: > 80% as determined by SDS-PAGE and Coomassie blue staining

Buffer: 25 mM Tris-HCl, 100 mM glycine, pH 7.3, 10% glycerol

Bioactivity: Cell treatment (PMID: [27806289](#))

Preparation: Recombinant protein was captured through anti-DDK affinity column followed by conventional chromatography steps.

Note: For testing in cell culture applications, please filter before use. Note that you may experience some loss of protein during the filtration process.

Storage: Store at -80°C.

Stability: Stable for 12 months from the date of receipt of the product under proper storage and handling conditions. Avoid repeated freeze-thaw cycles.

RefSeq: [NP_009048](#)

Locus ID: 7200



[View online »](#)

UniProt ID: [P20396](#)

RefSeq Size: 1890

Cytogenetics: 3q22.1

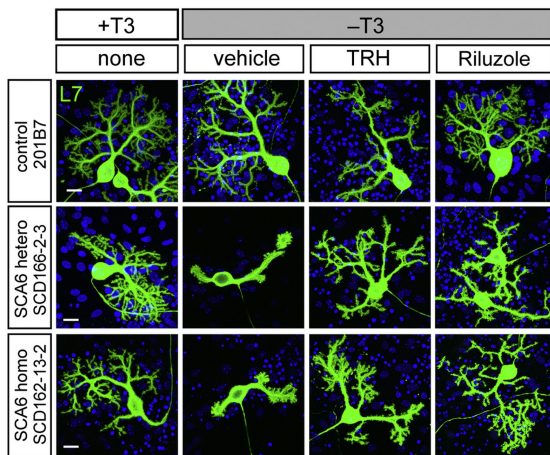
RefSeq ORF: 726

Synonyms: Pro-TRH; TRF

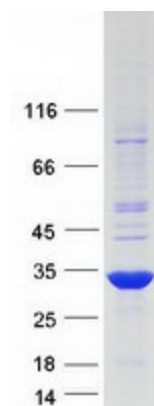
Summary: This gene encodes a member of the thyrotropin-releasing hormone family. Cleavage of the encoded proprotein releases mature thyrotropin-releasing hormone, which is a tripeptide hypothalamic regulatory hormone. The human proprotein contains six thyrotropin-releasing hormone tripeptides. Thyrotropin-releasing hormone is involved in the regulation and release of thyroid-stimulating hormone, as well as prolactin. Deficiency of this hormone has been associated with hypothalamic hypothyroidism. [provided by RefSeq, May 2013]

Protein Families: Druggable Genome, Secreted Protein

Product images:



TRH enhances the survival and dendritic maintenance of SCA6 Purkinje cells. High-magnification images are L7+ Purkinje cells in green derived from control, heterozygous, and homozygous iPSCs on culture day 75 in the presence or absence of T3 and with or without TRH 1 (OriGene [TP319231]) or Riluzole. The scale bars represent 20 um. Figure cited from Cell Rep, PMID: 27806289



Coomassie blue staining of purified TRH protein (Cat# [TP319231]). The protein was produced from HEK293T cells transfected with TRH cDNA clone (Cat# [RC219231]) using MegaTran 2.0 (Cat# [TT210002]).