

## Product datasheet for TP319231

### Thyrotropin Releasing Hormone (TRH) (NM\_007117) Human Recombinant Protein

#### Product data:

**Product Type:** Recombinant Proteins

**Description:** Recombinant protein of human thyrotropin-releasing hormone (TRH), 20 µg

**Species:** Human

**Expression Host:** HEK293T

**Expression cDNA Clone or AA Sequence:** >RC219231 protein sequence  
**Red**=Cloning site **Green**=Tags(s)

MPGPWLLLALALTLNLTGVPGGRAQPEAAQAEAVTAAEHPGLDDFLRQVERLLFLRENIQRLQGDQGEHS  
ASQIFQSDWLSKRQHPGKREEEEEEGVEEEEEEGGAVGPHKRQHPGRREDEASWSVDVTQHKRQHPGRR  
SPWLAYAVPKRQHPGRRADPKAQRSWEEEEEEREEDLMPEKRQHPGKRALGGPCGPQGAYGQAGLLL  
GLLDDLSRSQGAEKQHPGRRAAWVREPLEE

**TR**TRPLEQKLISEEDLAANDILDYKDDDDKV

**Tag:** C-Myc/DDK

**Predicted MW:** 27.2 kDa

**Concentration:** >0.05 µg/µL as determined by microplate BCA method

**Purity:** > 80% as determined by SDS-PAGE and Coomassie blue staining

**Buffer:** 25 mM Tris-HCl, 100 mM glycine, pH 7.3, 10% glycerol

**Bioactivity:** Cell treatment (PMID: [27806289](#))

**Preparation:** Recombinant protein was captured through anti-DDK affinity column followed by conventional chromatography steps.

**Note:** For testing in cell culture applications, please filter before use. Note that you may experience some loss of protein during the filtration process.

**Storage:** Store at -80°C.

**Stability:** Stable for 12 months from the date of receipt of the product under proper storage and handling conditions. Avoid repeated freeze-thaw cycles.

**RefSeq:** [NP\\_009048](#)

**Locus ID:** 7200



[View online »](#)

UniProt ID: [P20396](#)

RefSeq Size: 1890

Cytogenetics: 3q22.1

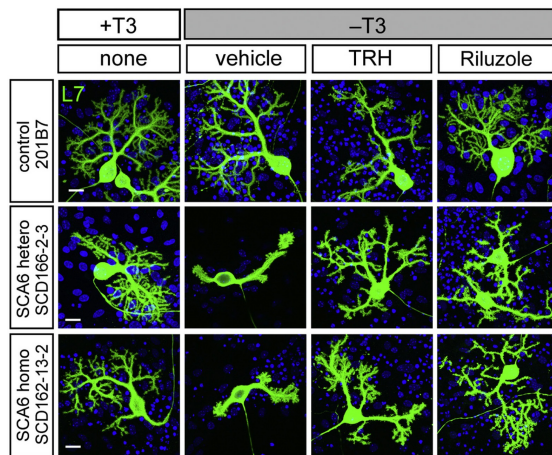
RefSeq ORF: 726

Synonyms: Pro-TRH; TRF

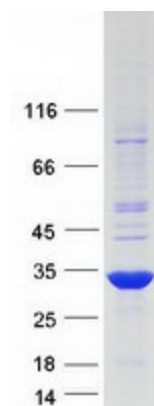
**Summary:** This gene encodes a member of the thyrotropin-releasing hormone family. Cleavage of the encoded proprotein releases mature thyrotropin-releasing hormone, which is a tripeptide hypothalamic regulatory hormone. The human proprotein contains six thyrotropin-releasing hormone tripeptides. Thyrotropin-releasing hormone is involved in the regulation and release of thyroid-stimulating hormone, as well as prolactin. Deficiency of this hormone has been associated with hypothalamic hypothyroidism. [provided by RefSeq, May 2013]

**Protein Families:** Druggable Genome, Secreted Protein

**Product images:**



TRH enhances the survival and dendritic maintenance of SCA6 Purkinje cells. High-magnification images are L7+ Purkinje cells in green derived from control, heterozygous, and homozygous iPSCs on culture day 75 in the presence or absence of T3 and with or without TRH 1 (OriGene TP319231) or Riluzole. The scale bars represent 20 um. Figure cited from Cell Rep, PMID: 27806289



Coomassie blue staining of purified TRH protein (Cat# TP319231). The protein was produced from HEK293T cells transfected with TRH cDNA clone (Cat# [RC219231]) using MegaTran 2.0 (Cat# [TT210002]).