

Product datasheet for TP319220

SHF (NM_138356) Human Recombinant Protein

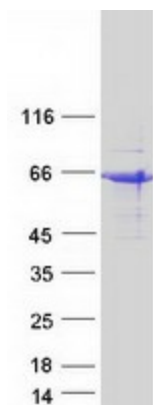
Product data:

Product Type:	Recombinant Proteins
Description:	Recombinant protein of human Src homology 2 domain containing F (SHF), 20 µg
Species:	Human
Expression Host:	HEK293T
Expression cDNA Clone or AA Sequence:	>RC219220 representing NM_138356 Red =Cloning site Green =Tags(s)
	<p>MQQEGGPVRSAPCRTGTLEGSRQSGPHRKRASPKGSLSSAQPHSWMLTPSPLNSHCAHREPISSSPQPV ANGPKQKKKSNWRSTTRLRIIRLRDRLEPRPLAILEDYADPFVQETGEGSAGASGAPEKVPENDGYMEP YEAQKMMAEIRGSKETATQPLPLYDTPYEPEEDGATPEGEGAPWPRESRLPEDDERPPEEYDQPWEWKKE RISKAFVDIKVIKDLPWPPVQGLDSSPSLPDGDGRDISGPASPLPEPSLEDSSAQFEGPEKSCLSPGRE EKGRLPPRLSAGNPKSAKPLSMEPSSPLGEWTDPALPLENQWYHGAI SRDAENLLRLCKEASLYVRNS ETSKNDFSLSLKSSQGMHMKLSRTKEHKYVLGQNSPPFSSVPEIVHHYASRKLPIKGAEHMSLLYPVAI RTL</p> <p>TRTRPLEQKLISEEDLAANDILDYKDDDDKV</p>
Tag:	C-Myc/DDK
Predicted MW:	46.6 kDa
Concentration:	>0.05 µg/µL as determined by microplate BCA method
Purity:	> 80% as determined by SDS-PAGE and Coomassie blue staining
Buffer:	25 mM Tris-HCl, 100 mM glycine, pH 7.3, 10% glycerol
Preparation:	Recombinant protein was captured through anti-DDK affinity column followed by conventional chromatography steps.
Note:	For testing in cell culture applications, please filter before use. Note that you may experience some loss of protein during the filtration process.
Storage:	Store at -80°C.
Stability:	Stable for 12 months from the date of receipt of the product under proper storage and handling conditions. Avoid repeated freeze-thaw cycles.
RefSeq:	<u>NP_612365</u>



[View online »](#)

Locus ID: 90525
UniProt ID: [B3KTY1](#)
RefSeq Size: 2517
Cytogenetics: 15q21.1
RefSeq ORF: 1269

Product images:

Coomassie blue staining of purified SHF protein (Cat# TP319220). The protein was produced from HEK293T cells transfected with SHF cDNA clone (Cat# [RC219220]) using MegaTran 2.0 (Cat# [TT210002]).