

Product datasheet for TP319213

SP6 (NM_199262) Human Recombinant Protein

Product data:

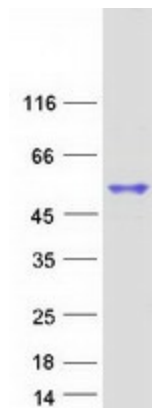
Product Type:	Recombinant Proteins
Description:	Recombinant protein of human Sp6 transcription factor (SP6), 20 µg
Species:	Human
Expression Host:	HEK293T
Expression cDNA Clone or AA Sequence:	>RC219213 protein sequence Red =Cloning site Green =Tags(s)
	MLTAVCGSLGSQLHTEAPHASPPRLDLQPLQTYQGHTSPEAGDYPSPLQPGELQSLPLGPEVDFSQGYELP GASSRVTCEDESPLAPGPFKLLQPDMSHHYESWFRPTHGAEDGSWWDLHPGTSMWMDLPHTQGALT SPGHPGALQAGLGGYVDHQLCAPPHPHAHLLPAAGGQHLLGPPDGAKALEVAAPESQGLDSSLDGAA RPGKSRSSVPRSSGQTVCRPCNACLEAERLGAPCGPDGGKKHLHNCHIPGCGKAYAKTSHLKAHLRWHS DRPFVCNWLFCGKRFRSDELQRHLQTHGTGKFKPCAVCSRVMRSDHLAKHMKTHEGAKEEAAGAASGE GKAGGAVEPPGGKGRKREAGSVAPSN
	TRTRPLEQKLISEEDLAANDILDYKDDDDKV
Tag:	C-Myc/DDK
Predicted MW:	39.7 kDa
Concentration:	>0.05 µg/µL as determined by microplate BCA method
Purity:	> 80% as determined by SDS-PAGE and Coomassie blue staining
Buffer:	25 mM Tris-HCl, 100 mM glycine, pH 7.3, 10% glycerol
Preparation:	Recombinant protein was captured through anti-DDK affinity column followed by conventional chromatography steps.
Note:	For testing in cell culture applications, please filter before use. Note that you may experience some loss of protein during the filtration process.
Storage:	Store at -80°C.
Stability:	Stable for 12 months from the date of receipt of the product under proper storage and handling conditions. Avoid repeated freeze-thaw cycles.
RefSeq:	NP_954871
Locus ID:	80320



[View online »](#)

UniProt ID:	Q3SY56 , B3KXP2
RefSeq Size:	3794
Cytogenetics:	17q21.32
RefSeq ORF:	1128
Synonyms:	EPFN; EPIPROFIN; KLF14
Summary:	SP6 belongs to a family of transcription factors that contain 3 classical zinc finger DNA-binding domains consisting of a zinc atom tetrahedrally coordinated by 2 cysteines and 2 histidines (C2H2 motif). These transcription factors bind to GC-rich sequences and related GT and CACCC boxes (Schohy et al., 2000 [PubMed 11087666]).[supplied by OMIM, Mar 2008]
Protein Families:	Transcription Factors

Product images:



Coomassie blue staining of purified SP6 protein (Cat# TP319213). The protein was produced from HEK293T cells transfected with SP6 cDNA clone (Cat# [RC219213]) using MegaTran 2.0 (Cat# [TT210002]).