

## Product datasheet for **TP319208M**

### LAMP1 (NM\_005561) Human Recombinant Protein

#### Product data:

Product Type:	Recombinant Proteins
Description:	Recombinant protein of human lysosomal-associated membrane protein 1 (LAMP1), 100 µg
Species:	Human
Expression Host:	HEK293T
Expression cDNA Clone or AA Sequence:	>RC219208 representing NM_005561 <b>Red</b> =Cloning site <b>Green</b> =Tags(s)

MAAPGSARRPLLLLLLLLLLGLMHCAAMFMVKNNGTACIMANFSAAFSVNYDTKSGPKNMFTDLPSD  
ATVVLNRSSCGKENTSDPSLVIAFGRGHTLTLNFRNATRYSVQLMSFVYNLSDTHLFPNASSKEIKTVE  
SITDIRADIDKKYRCVSGTQVHMNNVTVTLHDATIAYLSNSSFSRGETRCEQDRPSTTAPPAPPSPSP  
SPVPKSPVDKYNVSGTNGTCLLASMGLQLNLTIERKDNNTVTRLLNINPNKTSASGSCGAHLVTLLEHS  
EGTTVLLFQFGMNASSSRFFLQGIQLNTILPDARDPAFKAANGSLRALQATVGNSYKCNAAEHVVRTKAF  
SVNIFKVVWQAFKVEGGQFGSVVECLLDENSMLIPIAVGGALAGLVLIVLIAYLVGRKRSHAGYQTI

**TRTRPLEQKLISEEDLAANDILDYKDDDDKV**

Tag:	C-Myc/DDK
Predicted MW:	41.9 kDa
Concentration:	>0.05 µg/µL as determined by microplate BCA method
Purity:	> 80% as determined by SDS-PAGE and Coomassie blue staining
Buffer:	25 mM Tris-HCl, 100 mM glycine, pH 7.3, 10% glycerol
Preparation:	Recombinant protein was captured through anti-DDK affinity column followed by conventional chromatography steps.
Note:	For testing in cell culture applications, please filter before use. Note that you may experience some loss of protein during the filtration process.
Storage:	Store at -80°C.
Stability:	Stable for 12 months from the date of receipt of the product under proper storage and handling conditions. Avoid repeated freeze-thaw cycles.
RefSeq:	<a href="#">NP_005552</a>
Locus ID:	3916



[View online »](#)

UniProt ID: [P11279](#), [A0A024RDY3](#)

RefSeq Size: 2560

Cytogenetics: 13q34

RefSeq ORF: 1251

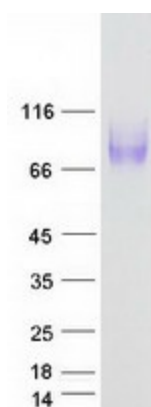
Synonyms: CD107a; LAMPA; LGP120

Summary: The protein encoded by this gene is a member of a family of membrane glycoproteins. This glycoprotein provides selectins with carbohydrate ligands. It may also play a role in tumor cell metastasis. [provided by RefSeq, Jul 2008]

Protein Families: ES Cell Differentiation/IPS, Transmembrane

Protein Pathways: Lysosome

### Product images:



Coomassie blue staining of purified LAMP1 protein (Cat# [TP319208]). The protein was produced from HEK293T cells transfected with LAMP1 cDNA clone (Cat# [RC219208]) using MegaTran 2.0 (Cat# [TT210002]).