

Product datasheet for TP319208L

LAMP1 (NM_005561) Human Recombinant Protein

Product data:

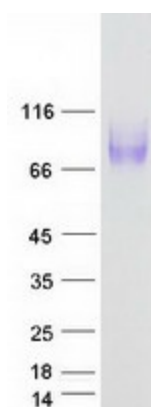
Product Type:	Recombinant Proteins
Description:	Recombinant protein of human lysosomal-associated membrane protein 1 (LAMP1), 1 mg
Species:	Human
Expression Host:	HEK293T
Expression cDNA Clone or AA Sequence:	>RC219208 representing NM_005561 Red =Cloning site Green =Tags(s)
	<p>MAAPGSARRPLLLLLLLLLLGLMHCAAMFMVKNNGTACIMANFSAAFSVNYDTKSGPKNMFTDLPSD ATVVLNRSSCGKENTSDPSLVIAFGRGHTLTLNFRNATRYSVQLMSFVYNLSDTHLFPNASSKEIKTVE SITDIRADIDKKYRCVSGTQVHMNNVTVTLHDATIAYLSNSSFSRGETRCEQDRPSPTTAPPAPPSPSP SPVPKSPVDKYNVSGTNGTCLLASMGLQLNLTIERKDNTTVTRLLNINPNKTSASGSCGAHLVTLLEHS EGTTVLLFQFGMNASSSRFFLQGIQLNTILPDARDPAFKAANGSLRALQATVGNSYKCNAAEHVVRTKAF SVNIFKVVWQAFKVEGGQFGSVVECLLDENSMLIPIAVGGALAGLVLIVLIAAYLVGRKRSHAGYQTI</p> <p>TRTRPLEQKLISEEDLAANDILDYKDDDDKV</p>
Tag:	C-Myc/DDK
Predicted MW:	41.9 kDa
Concentration:	>0.05 µg/µL as determined by microplate BCA method
Purity:	> 80% as determined by SDS-PAGE and Coomassie blue staining
Buffer:	25 mM Tris-HCl, 100 mM glycine, pH 7.3, 10% glycerol
Preparation:	Recombinant protein was captured through anti-DDK affinity column followed by conventional chromatography steps.
Note:	For testing in cell culture applications, please filter before use. Note that you may experience some loss of protein during the filtration process.
Storage:	Store at -80°C.
Stability:	Stable for 12 months from the date of receipt of the product under proper storage and handling conditions. Avoid repeated freeze-thaw cycles.
RefSeq:	NP_005552
Locus ID:	3916



[View online »](#)

UniProt ID:	P11279 , A0A024RDY3
RefSeq Size:	2560
Cytogenetics:	13q34
RefSeq ORF:	1251
Synonyms:	CD107a; LAMPA; LGP120
Summary:	The protein encoded by this gene is a member of a family of membrane glycoproteins. This glycoprotein provides selectins with carbohydrate ligands. It may also play a role in tumor cell metastasis. [provided by RefSeq, Jul 2008]
Protein Families:	ES Cell Differentiation/IPS, Transmembrane
Protein Pathways:	Lysosome

Product images:



Coomassie blue staining of purified LAMP1 protein (Cat# [TP319208]). The protein was produced from HEK293T cells transfected with LAMP1 cDNA clone (Cat# [RC219208]) using MegaTran 2.0 (Cat# [TT210002]).