

Product datasheet for **TP319180M**

LRRC3 (NM_030891) Human Recombinant Protein

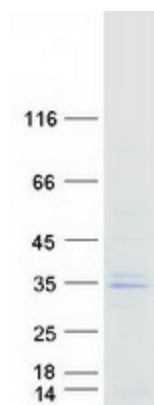
Product data:

Product Type:	Recombinant Proteins
Description:	Recombinant protein of human leucine rich repeat containing 3 (LRRC3), 100 µg
Species:	Human
Expression Host:	HEK293T
Expression cDNA Clone or AA Sequence:	>RC219180 protein sequence Red =Cloning site Green =Tags(s)
	<p>MGTVRPPRPSLLLVSTRESCLFLLFCLHLGAACPQPCRPCDHAGAVAVFCSLRGLQVEPEDIPANTVLLK LDANKISHLPDGAHQHLHRLRELDLSHNAIEAIGSATFAGLAGGLRLLDLSYNRIQRIPKDALGKLSAKI RLSHNPLHCECALQEALWELKLPDSVDEIACHTSVQEEFVGKPLVQALDAGASLCSVPHRTTDMVAMLV MFGWFAMVIAYVYVYVRHNQEDARRHLEYLKSLSAPASKDPIGPGP</p> <p>TRTRPLEQKLISEEDLAANDILDYKDDDDKV</p>
Tag:	C-Myc/DDK
Predicted MW:	24.6 kDa
Concentration:	>0.05 µg/µL as determined by microplate BCA method
Purity:	> 80% as determined by SDS-PAGE and Coomassie blue staining
Buffer:	25 mM Tris-HCl, 100 mM glycine, pH 7.3, 10% glycerol
Preparation:	Recombinant protein was captured through anti-DDK affinity column followed by conventional chromatography steps.
Note:	For testing in cell culture applications, please filter before use. Note that you may experience some loss of protein during the filtration process.
Storage:	Store at -80°C.
Stability:	Stable for 12 months from the date of receipt of the product under proper storage and handling conditions. Avoid repeated freeze-thaw cycles.
RefSeq:	<u>NP_112153</u>
Locus ID:	81543
UniProt ID:	<u>Q9BY71</u>



[View online »](#)

RefSeq Size:	2520
Cytogenetics:	21q22.3
RefSeq ORF:	771
Synonyms:	C21orf30; C21orf102; LRRC3DN
Protein Families:	Transmembrane

Product images:


Coomassie blue staining of purified LRRC3 protein (Cat# [TP319180]). The protein was produced from HEK293T cells transfected with LRRC3 cDNA clone (Cat# [RC219180]) using MegaTran 2.0 (Cat# [TT210002]).