

Product datasheet for **TP319180**

LRR3 (NM_030891) Human Recombinant Protein

Product data:

Product Type: Recombinant Proteins

Description: Recombinant protein of human leucine rich repeat containing 3 (LRR3), 20 µg

Species: Human

Expression Host: HEK293T

**Expression cDNA Clone
or AA Sequence:** >RC219180 protein sequence
Red=Cloning site **Green**=Tags(s)

MGTVRPPRPSLLLSTRESCLFLLFCLHLGAACPQPCRCPDHAGAVAVFCSLRGLQVEPEDIPANTVLLK
LDANKISHLPDGAFQHLHRLRELDLSHNAIEAIGSATFAGLAGGLRLLDLSYNRIQRIPKDALGKLSAKI
RLSHNPLHCECALQEALWELKLPDSVDEIACHTSVQEEFVGKPLVQALDAGASLCSVPHRTTDDVAMLV
MFGWFAMVIAYVWVYVRHNQEDARRHLEYLKSLSPAPASKDPIGPGP

TRTRPLEQKLISEEDLAANDILDYKDDDDKV

Tag: C-Myc/DDK

Predicted MW: 24.6 kDa

Concentration: >0.05 µg/µL as determined by microplate BCA method

Purity: > 80% as determined by SDS-PAGE and Coomassie blue staining

Buffer: 25 mM Tris-HCl, 100 mM glycine, pH 7.3, 10% glycerol

Preparation: Recombinant protein was captured through anti-DDK affinity column followed by conventional chromatography steps.

Note: For testing in cell culture applications, please filter before use. Note that you may experience some loss of protein during the filtration process.

Storage: Store at -80°C.

Stability: Stable for 12 months from the date of receipt of the product under proper storage and handling conditions. Avoid repeated freeze-thaw cycles.

RefSeq: [NP_112153](#)

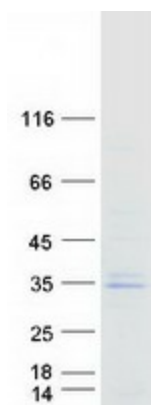
Locus ID: 81543

UniProt ID: [Q9BY71](#)



[View online »](#)

RefSeq Size:	2520
Cytogenetics:	21q22.3
RefSeq ORF:	771
Synonyms:	C21orf30; C21orf102; LRRC3DN
Protein Families:	Transmembrane

Product images:

Coomassie blue staining of purified LRRC3 protein (Cat# TP319180). The protein was produced from HEK293T cells transfected with LRRC3 cDNA clone (Cat# [RC219180]) using MegaTran 2.0 (Cat# [TT210002]).