

## Product datasheet for TP319147M

### RASGRF1 (NM\_002891) Human Recombinant Protein

#### Product data:

Product Type:	Recombinant Proteins
Description:	Recombinant protein of human Ras protein-specific guanine nucleotide-releasing factor 1 (RASGRF1), transcript variant 1, 100 µg
Species:	Human
Expression Host:	HEK293T
Expression cDNA Clone or AA Sequence:	>RC219147 representing NM_002891 Red=Cloning site Green=Tags(s)

MQKGIRLNDGHVASLGLLARKDGRKGYLSKRSSDNTKWQTKWFALLQNLLFYFESDSSSRPSGLYLLEG  
CVCDRAPSPKPALSAKEPLEKQHYFTVNFHENQKALELRTEDAKDCDEWVAIAHASYRTLATEHEALM  
QKYLHLLQIVETEKTVAKQLRQQIEDGEIEIERLKAETSLLKDNERIQSTQTVAPNDESDIKKIKVQ  
SFLRGWLCRRKWKTIQDYIRSPHADSMRKRNVVFSMLEAEAEVYQQLHILVNNFLRPLRMAASSKKPP  
ITHDDVSSIFLNSETIMFLHQIFYQGLKARISSWPTLVLADLFDILLPMLNIYQEFVRNHQYSLQILAH  
KQNRDFDKLLKHYEAKPDCEERTLETFLTYPMFQIPRYILTLHELLAHTPHEHVERNSLDYAKSKLEELS  
RIMHDEVSETENIRKNLAIERMIEGCEILLDTSQTFVRQGLIQVPMSEKGIKTRGRLGSLKKEGER  
QCFLFSKHLIICTRGSGGKLHLTKNGVISLIDCTLLEPESTEEEAAGSGQDIDHLDLDFKIGVEPKDSPFF  
TVILVASSRQEKAAWTSDISQCVDNIRCNGLMMNAFEENSKVTPQMIKRTREGTREAEMSRSDASLYCD  
DVDIRFSKTMNSCKVLQIRYASVERLLERLTDLRFLSIDFLNFTLHSHYRVFTTAIVLVDKLTITYKKPIS  
AIPARWLRSELELLFASGQNNKLLYGEPKSPRATRFSSPPPLSITKTSSPSRRRKLNLNIPITGGKAL  
DLAALSCNSNGYTSMYSAMPFSKATLDTSKLYVSSSFTNKIPDEGDTTPEKPEDPSALSQKSSSEVSMRE  
ESDIDQNSDDGDTETSPTKSPTPKSVKNKNSSEFPLFSYNNGVVMTSCRELDNNRSALSAASAFAIAT  
AGANEGTPNKEKYRRMSLASAGFPDQRNGDKEFVIRRAATNRVNLVLRHWWVSKHSQDFETNDELKCKVI  
GFLEEVMDPELLTQERKAAANIIRTLTQEDPGDNQITLLEITQMAEGVKAEPFENHSAIEAQLTLLD  
HLVFKKIPYEEFFGQGWMLKLEKNERTPYIMKTTKHFNDISNLIASEIIRNEDINARVSAIEKWWAVADIC  
RCLHNYNAVLEITSSMNRSAIFRLKKTWLKVSQTKALIDKLQKLVSEGRFKNLREALKNCPPCVPYL  
GMYLTDLAFIEEGTPNYTEDGLVNFSKMRMISHIIRIQFQQTAYKIEHQAKVTQYLLDQSFVMDDEESL  
YESSLRIEPKLPT

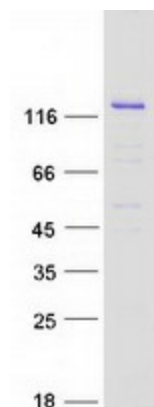
TRTRPLEQKLISEEDLAANDILDYKDDDDKV

Tag:	C-Myc/DDK
Predicted MW:	145.1 kDa



[View online »](#)

<b>Concentration:</b>	>0.05 µg/µL as determined by microplate BCA method
<b>Purity:</b>	> 80% as determined by SDS-PAGE and Coomassie blue staining
<b>Buffer:</b>	25 mM Tris-HCl, 100 mM glycine, pH 7.3, 10% glycerol
<b>Preparation:</b>	Recombinant protein was captured through anti-DDK affinity column followed by conventional chromatography steps.
<b>Note:</b>	For testing in cell culture applications, please filter before use. Note that you may experience some loss of protein during the filtration process.
<b>Storage:</b>	Store at -80°C.
<b>Stability:</b>	Stable for 12 months from the date of receipt of the product under proper storage and handling conditions. Avoid repeated freeze-thaw cycles.
<b>RefSeq:</b>	<a href="#">NP_002882</a>
<b>Locus ID:</b>	5923
<b>UniProt ID:</b>	<a href="#">Q13972</a> , <a href="#">A8K270</a>
<b>RefSeq Size:</b>	4022
<b>Cytogenetics:</b>	15q25.1
<b>RefSeq ORF:</b>	3819
<b>Synonyms:</b>	CDC25; CDC25L; GNRP; GRF1; GRF55; H-GRF55; PP13187; ras-GRF1
<b>Summary:</b>	The protein encoded by this gene is a guanine nucleotide exchange factor (GEF) similar to the <i>Saccharomyces cerevisiae</i> CDC25 gene product. Functional analysis has demonstrated that this protein stimulates the dissociation of GDP from RAS protein. The studies of the similar gene in mouse suggested that the Ras-GEF activity of this protein in brain can be activated by Ca <sup>2+</sup> influx, muscarinic receptors, and G protein beta-gamma subunit. Mouse studies also indicated that the Ras-GEF signaling pathway mediated by this protein may be important for long-term memory. Alternatively spliced transcript variants encoding distinct isoforms have been reported. [provided by RefSeq, Mar 2009]
<b>Protein Families:</b>	Druggable Genome
<b>Protein Pathways:</b>	Focal adhesion, MAPK signaling pathway

**Product images:**

Coomassie blue staining of purified RASGRF1 protein (Cat# [TP319147]). The protein was produced from HEK293T cells transfected with RASGRF1 cDNA clone (Cat# [RC219147]) using MegaTran 2.0 (Cat# [TT210002]).