

Product datasheet for **TP319139L**

MTUS2 (NM_015233) Human Recombinant Protein

Product data:

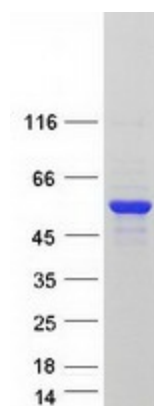
Product Type:	Recombinant Proteins
Description:	Recombinant protein of human KIAA0774 (KIAA0774), transcript variant 2, 1 mg
Species:	Human
Expression Host:	HEK293T
Expression cDNA Clone or AA Sequence:	>RC219139 representing NM_015233 Red =Cloning site Green =Tags(s)
	<p>MGHCCCKPYNCLQCLDKTNESALVKEKELSIELANIRDEVAFHAKCEKLQKEKEELERRFEDEVKRLGW QQQAELQELEERLQLQFEAEMARLQEEHGDQLLSIRCQHQQEQVEDLTASHDAALEMENNHTVAITILQ D DHDHKVQELMSTHELEKKELEENFEKLRLSLQDQVDTLTFQSSQLRDRARRFEEALRKNTTEEQLIALAP YQHLEEDMKSLKQVLEMKNQQIHEQEKKILELEKLAEKNIILEEKIQLVQQQNEDLKARIDQNTVTRQL SEENANLQEYVEKETQEKRLSRTNEELLWKLQTGDPTSPIKLSPTSPVYRGSSSGPSSPARVSTTPR</p> <p>TRTRPLEQKLISEEDLAANDILDYKDDDDKV</p>
Tag:	C-Myc/DDK
Predicted MW:	40.6 kDa
Concentration:	>0.05 µg/µL as determined by microplate BCA method
Purity:	> 80% as determined by SDS-PAGE and Coomassie blue staining
Buffer:	25 mM Tris-HCl, 100 mM glycine, pH 7.3, 10% glycerol
Preparation:	Recombinant protein was captured through anti-DDK affinity column followed by conventional chromatography steps.
Note:	For testing in cell culture applications, please filter before use. Note that you may experience some loss of protein during the filtration process.
Storage:	Store at -80°C.
Stability:	Stable for 12 months from the date of receipt of the product under proper storage and handling conditions. Avoid repeated freeze-thaw cycles.
RefSeq:	<u>NP_056048</u>
Locus ID:	23281



[View online »](#)

UniProt ID:	<u>Q5JR59</u>
RefSeq Size:	1779
Cytogenetics:	13q12.3
RefSeq ORF:	1044
Synonyms:	CAZIP; ICIS; KIAA0774; TIP150
Summary:	Binds microtubules. Together with MAPRE1 may target the microtubule depolymerase KIF2C to the plus-end of microtubules. May regulate the dynamics of microtubules at their growing distal tip.[UniProtKB/Swiss-Prot Function]

Product images:



Coomassie blue staining of purified MTUS2 protein (Cat# [TP319139]). The protein was produced from HEK293T cells transfected with MTUS2 cDNA clone (Cat# [RC219139]) using MegaTran 2.0 (Cat# [TT210002]).